

**The Oriental Insurance Company Ltd.
A-25/27,Asaf Ali Road,,
New Delhi -110002**

Tender Documents

**NAME OF WORK: INTERIOR ,FURNISHING, ELECTRICAL ,
FIRE FIGHTING AND AIR CONDITIONING
WORKS AT THIRD FLOOR**

AT

**# N.B.C.C CENTRE
OKHLA , PHASE-I, NEW DELHI-110020**

Lead Consultants:

Vastu Mandal
Architects & Interior Designers
F-328, Lado Sarai,
New Delhi-110030
Ph 41665455 Fax 41665455
E-Mail –vastumandal@gmail.com

PART –II

FINANCIAL BID

SECTION V (SCHEDULE OF QUANTITIES)						
A CIVIL WORK:						
S.No.	Description	Unit	Qty.	Rate (Rs)	Rate (in words)	Amount (Rs)
	Notes :-					
	Rates are for working at all heights including cost of centering ,shuttering and scaffolding unless otherwise mentioned					
	All internal woodworks including inner surface of plywood shall be treated with antitermite wood preservative against borere pests aand white ants					
	Wherever basic prices are given they shall be inclusive of all taxes ex Godown/Shop in Delhi NCR					
I	DISMANTLING					
	Note:-					
	The rate for all demolishing and dismantling to include carting and disposing of the debris outside the site at Municipal Dumping grounds.					
	Necessary propping, shoring and/ or underpinning shall be provided for the safety of the adjoining work or property, which is to be left in tact, before dismantling and demolishing is taken up and the work shall be carried out in such a way that no damage is caused to the adjoining work or property.					
	1.1 Dismantling / Demolishing Brick walls of various thickness. Disposal of unserviceable material to a place permitted by the municipal authorities including making good any damages done to the structure complete. No unserviceable dismantled material will be allowed to be accumulated at site.	CUM	0.5			
	1.2 Dismantling & refixing Aluminium /Wooden/ Steel Door Frame including chowkhat & shutter	EACH	2			

1.3	MAKING CUT OUT IN MASONRY WALL :- Making openings in walls for windows, AC ducting etc. without damaging the surroundings and making good the affected areas with smooth plaster in mix proportion 1:4 finished in paint , inclusive of lintel support in Cuddapah/Sand stone of thickness 25mm to be provided where ever required. Cost to be inclusive of filling the excess opening with brick bats and finishing the same in smooth plaster in cement mortar 1:4, proper curing, giving supports to walls etc., complete.	SQM	5		
1.4	CORE CUTTING :- Providing and making openings of following Sizes in RCC slab of thickness 200mm, with core cutting machine inclusive of filling of core cut with fire retardant sealant of approved make as per the manufacturer's specification, cleaning, waterproofing the sides of the cut area and providing waterproofing guarantee etc complete. Note: The contractor should determine the location of beams/post tensioned tendons before carrying out the operation, getting prior approval from the builder/structural consultant and cutting all reinforcement by gas cutting machine or as directed etc., complete. As mention by the Architect.	EACH	10		
TOTAL OF DISMANTLING carried over to summary of Civil Works					
II SUPER STRUCTURE					
2.1	Brick Wall in cement mortar 1:4 (1 cement : 4 coarse sand) in superstructure, including scaffolding, cutting, plumbing, leveling, curing etc. with bricks of class designation 75. All complete as per drawing, approval and instructions of the Architect.				
a)	115mm thick with 2 nos. M.S. Reinforcement bars 6mm dia as hoop in every 4 th coarse. (Cost of binding wire for reinforcement shall be borne by the contractor and shall not be measured for payment).	SQM	140		
2.2	Providing and fixing RCC (grade - M20) lintel including steel work over doors / windows as per design of size 150 x 100mm with 0.2mt bearing on both sides of door including centering and shuttering and reinforcement @ 100 kg per cubic meter. All complete as per approval and instructions of the Architect.	CUM	0.1		

2.3	<p>CEMENT PLASTER :- Providing and laying 12 to 15mm thick cement plaster of mix 1:4:2 (1 cement : 4 fine sand : 2 coarse sand) to all type of RCC/ Brick work in line, level and plumb including smooth cement finish as directed including providing necessary bands, drip moulds groove and wire mesh at all junction of walls and ceiling including racking the joints or roughening the RCC surfaces, necessary curing scaffolding etc., complete as directed and specified.</p>	SQM	280		
2.4	<p>WATERPROOFING :- Providing and applying Acrylic Polymer Modified Flexible Cementitious Coating [approved systems : (1) SIKA Top Seal 107 (2) FOSROC Brush bond in 2 or 3 coats as per manufacturers' specification and as approved by the Engineer-in-charge to the sunk slab and walls up to minimum 1 M height, complete. The treatment to include cleaning and wire-brushing the concrete surface, treating all the cracks (wider than hairline), construction joints and honeycombs by grouting with specialised non-shrink cementitious compound, grouting the annular space between the pipe and concrete / masonry, providing and applying a protective 15 mm thick, CM 1:4 plaster admixed with integral waterproofing compound, curing, at all levels and heights, etc., complete.</p>	SQM	25		
2.5	<p>CEMENT CONCRETE SCREEDING :- Providing and laying 40mm thick average IPS (Indian Patent Stone) for flooring to a maximum 75mm to 85mm thick using cement concrete 1:2:4 (1 cement : 2 Coarse sand : 4 graded stone aggregate 20mm and down gauge) for flooring bands and other similar locations, tamped, spaded, trowelled and top finished neat, smooth with floating coat of cement as directed laid in alternate panels of area not more than 2 sqm and laid to water levels or proper slopes as directed with necessary shuttering, hacking the existing surface, curing etc, complete at all heights and levels as per site condition.</p>	SQM	25		

	2.6 CEMENT CONCRETE :- Providing and laying cement concrete 1:2:4 (1cement : 2 Coarse sand : 4 graded stone aggregate 20mm and down gauge) for flooring subbase and other similar locations and laid to water levels or proper slopes as directed with necessary shuttering, hacking the existing surface, curing etc, complete at all heights and levels as per site condition.	CUM	35		
	2.7 FOAM CONCRETE FILLING UNDER TOILETS AND PANTRY :- Filling and compacting Foam Concrete for raising level of toilets and pantry and finishing in a coat of lean concrete screeding with waterproofing compound complete in all respects to take Tile Flooring as per flooring specifications.	CUM	1		
	2.8 REINFORCED CEMENT CONCRETE :- Reinforced cement concrete work with M-20 grade reinforced cement concrete in columns, lintels, beams counter, shelves including the cost of centring and shuttering finishing and reinforcement at all height & levels. Include cost of steel & shuttering.	CUM	1		
	2.9 CLOSING OF CUT OUTS :- Closing of cut out (OF MAXIMUM 300MM X 300MM) in cement concrete and fixing of PVC sleeves as directed.	EACH	10		
	TOTAL OF SUPERSTRUCTURE carried over to summary of Civil Works				
III	PAVING AND WET WORKS				
	Note				
	The sample of tiles/ slabs to be submitted to the Architect/ Engineer for approval.				
	For floor tiles, all edges to be sorted for straight edges before laying. The tile will be laid after approval from the Architect/ Engineer at site.				

The rate to include all mirror machine polishing for Marble and wax mirror polishing or Titanium polishing for Kota stone. The final decision will be as per Architects instructions.					
The cost of tile/ stone mentioned below is the maximum cost. In no circumstances it should exceed the one mentioned in the respective items and is inclusive of all material cost, transportation, Octroi if applicable, loading-unloading and all taxes, statutory as applicable.					
All bull nosing, polishing etc for sills, frames and staircase treads should be factory finished and brought to site.					
The joints for all flooring to run in a straight line and should not exceed 1.5mm for stones and 1mm for tiles and should be filled with grouts to the full depth.					
The rate for all the flooring items (whether specifically mentioned or not) to include.					
(a) All materials, labour, surface preparation, working at all levels, tools and plants, machine polishing for stones like Marble, Kota.					
(b) Providing and laying polythene and layer of 12 mm thick Plaster Of Paris in two layers on existing flooring surface (For the projection of floor surface during other activities). Rate should be including cost of removing this protective layer, (after the work is completed) carrying all debris out of site and dumping it to municipal authorised dumping ground, cleaning the entire covered flooring area.					
(c) Grouting the joints as mentioned in the individual items.					
(d) Soaking the tiles in water for at least two hours before laying.					
(e) Curing					
(f) Cleaning the surface.					
(g) Cleaning and disposing off the debris at a location as desired by the Architect at site.					
(h) In case adhesives are used for flooring, the rate to be inclusive of extra cement bedding required to match the existing levels. In case, adhesives are used for cladding on walls, the rate to include backing coat plaster in cement mortar 1:3, to bring the wall in proper plumb, line and level.					
(i) Any additional mortar or concrete required to bring the surface to the required level and gradient before laying the base mortar at no extra cost.					

3.1 TILE DADO :-					
a	Providing and laying mirror polished 300x600mm vitrified tile dado a laid over adequate thickness of cement mortar 1:4 (1cement : 4 coarse sand) using chemical grouting aquamix/ laticrete grout. Tile adhesive unitile make. The rate shall be inclusive of necessary preparation, cleaning etc., complete. Suggested Tile: Kajari Lorenzo Beige	SQM	40		
b	Providing and laying tiles (thickness to be as specified by the manufacturer) conforming to IS-15622 of approved make in dado / skirting and in pattern as detailed in drawing. Tile to be embeded in 12mm thk cement sand mortar of mix ratio of 1:3 (1 cement : 3 coarse sand) including cleaning and preparing the surafce for bedding by spreading neat cement slurry by using minimum cement about 3.3 kg / sq. m. over cleaned surface. Joints to be cleaned and grouted with polymer grouts of approved shade, curing, cleaning etc. in plumb & level for all heights & leads etc. Complete cleaning prior to handing over. All as per drawing, approval and instructions of the Architect.				
i	Vitrified tile of homogeneous composition in dado of size 400mm x 800mm (Approx.) of approved shade and pattern (Basic rate of tile only Rs. 1250/- per sq.mtr.).	Sq.mtr.	25		
ii	Vitrified tile of homogeneous composition of approved shade and pattern in skirting 200mm high (Basic rate of tile only Rs. 1250/- per sq.mtr.).	R.mtr.	50		
3.2 VITRIFIED TILE FLOORING :-					
a)	Providing and laying tiles (thickness to be as per manufacturer's specification) with water absorption less than 0.08% and conforming to IS-15622 of approved make in flooring .Part tiles to be in super gloss finish and part in matt finish.Combination / Pattern i.e.proportion of supergloss and matt finish as per design intent and approval.				

	Tiles to be embedded in 20 mm thk cement sand mortar bed of mix ratio 1:4 (1 cement : 4 coarse sand) including cleaning and preparing the surface for bedding, spreading neat cement slurry by using minimum cement about 3.3 kg / sq. m. over cleaned surface of cement mortar bed, joints to be 4.5 mm th. achieved using PVC spacers ,cleaned and grouted with polymer grouts of approved shade, curing, cleaning etc. to required line, level etc. for all heights & leads complete.With Spacers of 4mm filled with Laticrete Epoxy Grout.				
i	Vitrified tile of homogeneous composition of size 800mm x 800mm (Approx.) of approved shade and pattern.(Basic rate of tile only Rs. 1100/- per sq.mtr.).Suggested Tile Kajaria Picasso Bronze	Sqm	100		
ii	Vitrified tile of homogeneous composition of size 600mm x 600mm (Approx.) Suggested Tile: Kajaria K-6000	Sqm	575		
3.3	ANTI SKID CERAMIC TILES :- Providing and laying flooring with Vitrified tiles of size 300mm x 300mm x 10mm of approved make and sample in pattern as per detailed drawings on up to 25mm thick bed of cement mortar 1:6 including surface preparation, neat cement float, giving necessary slopes, cleaning joints and grouting them in neat white cement paste with pigmented additives to match shade of the tile etc complete. With Spacers of 4mm filled with Laticrete Epoxy Grout. Suggested Tile: Kajaria Colorado Beige	SQM	20		
3.4	ANTI SKID CERAMIC TILES :- Providing and laying flooring with Vitrified tiles of size 400mm x 400mm x 10mm of approved make and sample in pattern as per detailed drawings on up to 25mm thick bed of cement mortar 1:6 including surface preparation, neat cement float, giving necessary slopes, cleaning joints and grouting them in neat white cement paste with pigmented additives to match shade of the tile etc complete. With Spacers of 4mm filled with Laticrete Epoxy Grout. Suggested Tile: Kajaria Bikaner Cotto	SQM	40		
3.5	SKIRTING OUT OF TILES (VITRIFIED TILE) -P/F Vitrified Tile Skirting 100 mm high out of Tiles of size 600mm x 600mm x 10mm as per the flooring.				
ii	Suggested Tile: Kajaria K-6000	RM	125		
ii	Suggested Tile: Kajaria Bikaner Cotto	RM	25		

3.6	PANTRY/ HAND WASH COUNTER :- Providing and fixing pantry with Granite stone top and 200 high back splash and front fascia with double bull nosing. The base of the counter in RCC. (Basic Rate of stone to be taken as Rs 2000/Sqmt) . Width of work top counter 600mm/ detailed drawings. The cost to include fixing of the counter using MS angles/ support with proper anchoring in the wall to take washbasin/ sink	RM	6			
3.6	GRANITE FLOORING :- Providing and 18 mm thick mirror polished , machine cut granite stone for Staircase , door thresholds, counter top or similar locatons of approved shade ,Colour and Pattern as per detailed drawings on up to 25mm thick bed of cement mortar 1:3, (1 Cement: 3Coarse Sand) with joints treated with matching pigment , epoxy touch ups including rubbing, polishing where required ,curing etc The nosing of tread shall be finished using flat Edge/Eased edge nosing . Complete in all respect at all floors as per directions Suggested Granite: Cat eye or equivalent priced granite as approved)	SQM	25			
	TOTAL OF PAVING AND WET WORKS carried over to summary of Civil Works					
IV	SANITARY FIXTURES AND FITTINGS					
4.1	Providing and fixing white vitreous china wall hung type water closet (European type) with Quiet- close seat and cover, C.P. brass hinges and rubber buffers , CI/MS chair, complete including painting of fittings and brackets, cutting and making good the walls and floors wherever required.					
	W.C. pan with ISI marked white solid plastic seat and lid.(Make Hindware Wall Hung WC Product Code –CNS-WHT-WS01+ CNB-WCS2 or approved equivalent.	Each	2			

4.2	Providing and fixing slim concealed flushing cistern ref. Jaquar code no. CIB-WHT-31801011XD or approved equivalent including providing and fixing flushing plate ref. Jaquar code CIS-CHR-31181810X7200 or approved equivalent with all fittings and fixtures complete to connect to W.C.	Each	2		
4.3	Providing and fixing wash basin ref. Jaquar Code. No. JDS-WHT0551 or approved equivalent with 32mm C.P. brass waste & union of standard pattern, including painting of fittings, cutting and making good the walls wherever required.	Each	2		
4.4	Supplying and fixing urinal with battery backup and urinal sensor, fixing to wall with required materials like teak wood plugs, packing pieces, screw nails, testing etc complete. (Make Jaquar cat. no. URS-WHT-0704 + SNR 51087 or approved equivalent.)	Each	1		
4.5	Providing and fixing C.P. brass single lever pillar cock ref. Jaquar cat. No. ARI 39011 or approved equivalent.	Each	2		
4.6	Providing and fixing C.P. brass toilet paper holder ref. Jaquar cat. No. ACN 1153N or approved equivalent.	Each	2		
4.7	Providing and fixing towel holder ref. Jaquar cat. No. ACN 1121N or approved equivalent.	Each	2		
4.8	Providing and fixing angular stop cock with wall flange ref. Jaquar cat. No. ARI 39053 or approved equivalent.	Each	8		
4.9	Providing & fixing Bottle trap to wash basins with CP necessary fittings ref. Jaquar cat. No. ALD 769L or approved equivalent.	Each	3		
4.1	Providing and fixing Health faucet with metal hose and holder in chrome polished (C.P.) ref. Jaquar cat. No. ALD CHR 573 or approved equivalent.	Each	2		
4.11	Providing and fixing kitchen sink spout ref. Jaquar cat. No. ARI 39347 or approved equivalent.	Each	1		

4.12	Providing and fixing 6mm thick looking mirror of size 600mm x 1200mm and with built in light over 18 mm th. marine ply with 3M double sided tape as per manufacturer's specifications. Sealing the edges with transparent silicon sealant bead. Mirror with edges machine transparent ground and 6mm bevelled. Item includes making provision for for 2nos. light fixtures. All complete as per design intent as follows, approval and instructions of the Architect.	Each	2		
4.13	Providing and fixing Stainless Steel A ISI 304(18/8) kitchen sink as per IS 13983 with C.I. brackets and stainless steel plug , 40 mm dia stainless steel waste and plug 40 mm including painting of fitting and brackets, cutting and making good the walls wherever required. Kitchen sink with drain board size 510x1145 mm bowl depth 200mm.	Each	1		
TOTAL OF SANITARY FITTINGS AND FIXTURE carried over to summary of Civil Works					
V	PLUMBING WORKS				
5.1	Providing & fixing of uPVC SWR pipes 4 Kg/cm ² (IS 13592-1992-Type B) including injection moulded fittings wherever required e.g., tees, bends of any degree, clamps, couplings, adapters, plugs, unions etc.and jointing with solvent cement including cutting and making good the floors and walls where required complete as per site.				
	75 mm O.D	Metre	35		
	110 mm O.D	Metre	30		
5.2	Providing and fixing of uPVC agricultural pipes conforming to IS:4985 Class III (6 kg/sqcm) including all fittings, e.g. couplings, tees, bends, reducers and screwed adoptors, plugs, unoins etc. and jointing with solvent cement joint including cutting and making good the floors and walls where required complete as per site.[for Waste Connections]				
i)	50 mm O.D	Metre	10		

5.3	Providing and fixing of uPVC P-Trap with extension piece including setting with cement concrete 1:2:4 (1 cement : 2 coarse sand: 4 stone aggregate 20 MM nominal size) the inlet from floor level to trap rim to be grouted and cemented neat manner including cutting and making good the floor & wall wherever required complete in all respects.					
	110 mm OD inlet & 110 mm OD outlet.	Each	10			
5.4	Providing and fixing of uPVC Multi Trap jointing with solvent including setting with cement concrete 1:2:4 (1 cement : 2 coarse sand: 4 stone aggregate 20 MM nominal size) the inlet from floor level to trap rim to be grouted and cemented neat manner including cutting and making good the floor & wall wherever required complete in all respects.					
	110 mm O.D inlet & 75 mm O.D outlet.	Each	5			
5.5	Providing and fixing stainless steel grating 1 mm thick with frame (with or with out hole) including fixing to the floor with cement mortar.					

	125 mm X 125mm	Each	5		
5.6	Providing and fixing chlorinated Polyvinyl Chloride (CPVC) pipes, having thermal stability for hot and cold water supply including all CPVC plain and brass threaded fittings including fixing the pipe with clamps at 1.00 M. spacing, This include jointing of pipes and fittings with one step CPVC solvent cement and testing of joints complete including cutting chases and making good the walls etc..				
a)	15 mm nominal outer dia pipes	Metre	25		
b)	20 mm nominal outer dia pipes	Metre	25		
c)	25 mm nominal outer dia pipes	Metre	30		
5.7	Providing and fixing Ball valve with hard chrome plated ball inside PTFE (Teflon) seat & ring with chrome plated centre handle with female BSP threads complete in all respects.				
a)	25 mm dia	Each	1		
	TOTAL OF PLUMBING WORKS carried over to summary of Civil Works				
VI	PAINTING POLISHING AND POP WORKS				
6.1	POP PUNNING (12-15 MM); Providing and fixing average 12 mm -15mm thick POP Punning over cement plaster in line and plumb finished smooth to receive paint	SQM	400		
6.2	Painting with silicon & acrylic emulsion based water thinnable sealer of approved brand and manufacture on wet or patchy portion of plastered surfaces				
	One coat	SQM	400		
6.3	Wall painting with plastic emulsion paint (roller finish) of approved brand and manufacture to give an even shade				
	One or more coats on new work	SQM	750		
6.5	French spirit polishing :				
a	One or more coats on old work sqm	SQM	25		
6.4	Painting with synthetic enamel paint of approved brand and manufacture to give an even shade:				
a	Two or more coats on new work over an under coat of				

	suitable shade with ordinary paint of approved brand and manufacturer	SQM	1000		
6.5	Providing and doing Polyurethane transparent coats to the laminated finish surfaces either matt / gloss. Item includes preparation of sub surface with approved sealers. Top coats applied with compressor in two / three layers.				
a)	Polyurethane clear transparent matt ref. ICA cat. OP3383	SQM	25		
	All complete as per Manufacturer's specifications, approval and instructions of the Architect.				
6.6	Providing and doing PU pigment white gloss paint ref. ICA Cat LP055P of approved shade on MDF board/ wood work as per manufacturer's technical specifications				
	All complete as per Manufacturer's specifications, approval and instructions of the Architect.	SQM	150		
	TOTAL OF POLISH & POP WORKS carried over to summary of Civil Works				

SUMMARY of CIVIL WORK

S.NO.	DESCRIPTION	AMOUNT (in fig. & words)
I	DISMANTLING	
II	SUPER STRUCTURE	
III	PAVING AND WET WORKS	
IV	SANITARY FITTINGS AND FIXTURES	
V	PLUMBING WORKS	
VI	PAINTING POLISHING AND POP WORKS	
<hr/> TOTAL OF CIVIL WORKS CARRIED TO GRAND SUMMARY <hr/>		

B FURNISHING WORK:						
S.No.	Description	Unit	Qty.	Rate (Rs)	Rate (in words)	Amount (Rs)
SUB HEAD - I						
I	FALSE CEILING					
Notes:						
a	No extra payment shall be made for the false ceiling surfaces (other than straight) which can be in the form of curves, edging or recesses etc. as may be specified or directed.					
b	No extra payment shall be made for providing framework diagonally.					
c	Rates shall be inclusive of providing additional framework for fitting light fixtures, AC supply /return air grilles / diffusers , Smoke detectors, Speakers, trap door cut outs etc.					
d	All defects / cracks formed during the construction period shall be rectified before handing over of the complete work.					
e	The rates shall be inclusive of necessary supports, scaffolding, labour etc.					
f	For the purpose of payment actual (net) surface area of the board (excluding wastages) applied shall be measured.					
g	For the purpose of payment complete exposed / accessible visible area of the board / ply / laminate including drops, slant/slopes etc. to be measured unless specified in another manner.					
h	All rates to include lead & lifting charges.					
1.1a	GYPBOARD CEILING :- Providing and fixing suspended false ceiling, which includes providing and fixing GI perimeter channels of size 0.55mm thick having one flange of 20mm and another flange of 30mm and a web of 27mm along with perimeter of ceiling, screw fixed to brick wall/ partition with the help of nylon sleeves and screws at 610mm centers. The suspending GI intermediate channel of size 45mm, 0.9mm thick with two flanges of 15mm each from the soffit at 1220mm centers with ceiling angle of width 25mmx 10mmx 0.55mm thick fixed to soffit with GI cleat and steel expansion fastene. Ceiling section of 0.55mm thickness having knurled web of 51.5mm and two flanges of 26mm each with lips of 10.5mm are then fixed to the intermediate channel with the help of connecting clips and in direction perpendicular to the intermediate channel at 457mm centers. 12.5mm tapered edge Gypboard (Conforming to IS- 2095-1982) is then screwed fixed to ceiling section with 25mm dry wall screw at 230mm centers. Screw fixing is done mechanically.					
	Finally the boards are to be jointed and finished so as to have a flush look which includes filling as finishing the tapered and square edge of the boards with joining compound, paper tape and two coats of primer suitable for Gypboard (as equivalent) extra frame work for electrical fittings, A/C diffusers, and/or any other cut-out, trap doors, wooden shadow battens (hollock wood black enamel painted-25x40mm) at wall peripheries and ends, 12mm thick MDF board for pelmet etc. complete including opening to be made for AC grills, light fittings, trap doors etc. (The quoted rate shall be inclusive of suspenders at all heights).	SQM	125			
b	Providing and fixing 75 high Gypsum board on GI frame as above specifications as vertical band on the edges of False Ceiling	RM	75			
1.2	Modular False ceiling					

S.No.	Description	Unit	Qty.	Rate (Rs)	Rate (in words)	Amount (Rs)
a	Providing and fixing Armstrong (Fine Fissured Micro Look with Tagular Edge using 24" X 24" tile laid on Armstrong Silhouette profile grid system .Silhouette, Main Runners & Cross Tees to have mitered ends & "birds mouth" notches to provide mitered cruciform junctions. T Suspension system for Armstrong grid to be of Armstrong make.	SQM	440			
b	Providing & Fixing true horizontal level suspended ceiling comprising of Armstrong GI Clip-in with double pip self-leveling feature and special tabs to allow removal of tile to enable plenum access with micro perforated (1.5mm diameter – 22% open area) visual consisting of 600X600 mm clip in tiles of galvanized steel in 0.5 mm thickness with bevel edge in Global white color pre-coated with primer coat at the rear side with Light Reflectance > 60% and suitable for Green Building application, with Recycled content of 25%. Tiles would have Soundtex fleece hot pressed at the back of the perforated panel to achieve an NRC of upto 0.7 and fire performance of Class A2-s1.d0 as per EN13501. Installation: To comprise 3000mm long 'C' channels spaced at 1200mm centers securely fixed to the structural soffit by support clamp & approved hangers. The last hanger at the end of each C channel should not be greater than 600mm from the adjacent wall. Use a C-channel connector for splicing two pieces of C-channels. 4000mm Dp-12 Main carriers (spring tee bars) shall be spaced at 600mm centers in a direction perpendicular to the C-channels and shall be secured at every intersection with C channel using a dp-12 hanger. Use Dp-12 connector to splice two pieces of Dp-12 main carriers. Tiles should be clipped in between two Dp-12 carriers (spring tee bars) from below. This is a downward installation. Perimeter trims to be of Armstrong wall angles of white color secured to walls at 450mm maximum centers. Cut tiles to be secured to the wall angles using a spring clamp.	SQM	40			
c	Providing and fixing Armstrong laminted perforated woodwork(Fine Fissured Micro Look Edge using 24" X 24" tile laid on Armstrong Silhouette profile grid system .Silhouette, Main Runners & Cross Tees to have mitered ends & "birds mouth" notches to provide mitered cruciform junctions. T Suspension system for Armstrong grid to be of Armstrong make. (Armstrong R6 tile suggested shade Royale Cherry)	SQM	25			
1.3	Providing and fixing to existing false ceiling framework, BWR ply with fully threaded parallel shank screws at 230mm centre to centre (c/c) both ways on the framework.					
	Frame work:					
	Metal sections comprising of Universal Channel (web 45mm and Flange 27mm, Base Metal Thickness (BMT) 0.55m and Length 3660mm to be used as "Main Channel" as well as Ceiling Channel, connecting clips, Perimeter channel (Size- Web 28mm, Flange 18/30mm and 3660mm length, BMT 0.55mm) and "L" angle (Length 3050mm BMT 0.55mm)					

S.No.	Description	Unit	Qty.	Rate (Rs)	Rate (in words)	Amount (Rs)
a)	First skin : 9mm th.BWR Ply & Second skin : 4mm th.Exterior grade MDF board and finish in 3.5mm thick Century equivalent approved Sucupira Veneer ply. First skin shall be screw fixed to the framework & the Second skin shall be screwed as well as glued to suitable framework. Veneer ply to be polished in clear polyurethane polish (ICA).	SQM	50			
	All complete as per specifications, drawings and instructions of the Architect.					
1.4	Providing & Fixing to any false ceiling cutouts for trap doors, as above Roller shutters as per following specifications:					
	Frame made from 18mm BWR ply by cutting slats of width 10cms. The frame is made using vertical member and horizontal member. The vertical member is cut in "L" shape.					
	Roller shutter cut to form a carpet and grip section with slider is attached. Spiral track and surface track is screwed to the frame.The carpet is rolled and inserted in the track by widening the gap between the two sides. The gap can be widened by inserting the wooden piece slightly larger than internal width.					
	For stability, the lateral movement of frame to be restricted by providing cross support at all the four corners and in the middle section. The cross support and support provided at middle is nailed to the frame.Frame to be hung from ceiling upside down with supports made in "T" shape.					
a)	Ref. Rehau AC trap door cat. - White colour	SQM	10			
	All complete as per manufacturer's specifications, design intent and instructions of the Architect.					
1.5	Providing and fixing suspended false ceiling in plaster of paris as per design:					
	Frame work made with GI grade 175 (120g/m ²) channel fixed with steel expansion fasteners as per requirement of the design indicated in the detailed drawing including providing and fixing galvanized chicken mesh fixed with GI screws to and in between main runners. Applying POP (Calcium sulphate semi hydrate variety) to a thickness of not less than 10mm over the XPM finished smooth to line and level.					
	The surface could be in the form of curves, edging or recesses etc. as may be specified or directed. Finally a coat of primer shall be applied followed by a 3 or more coats of plastic emulsion paint (roller finish) of approved shade and make. For light fittings, a/c grills diffusers /return air grills / trap doors etc. cut outs have to be made with suitable frame work. Rectifying all defects, and cracks formed during the construction period before handing over the work complete.	SQM	25			
1.6	P/F ceiling rafters with 4mm veneer (wenge shade)of approved design/pattern and make fixed over rectangular box of 75X100 crosssection made by joining the 19mm comm. Ply with grooves as per the drawing. Ply shall be fixed on to the partition/ pane/wall with pvc fastners.	RM	20			

S.No.	Description	Unit	Qty.	Rate (Rs)	Rate (in words)	Amount (Rs)
1.7	Providing and fixing 150 x 225 POP cove light as per drawing in crown moulding / lighting cove complete with necessary cut-outs for services out lets.	RM	30			
	TOTAL FALSE CEILING carried over to Summary of Furniture					
II	PARTITIONS AND WALL PANELLING					
2.1	Fixed in Situ Partition / Panelling Frame Work:					
	Providing and fixing in position mirandi wood framework to fit site for partitions and panelling as follows :					
a)	50mm x 50mm @ 400 mm centre to centre both ways for straight partitions (for full height and low height partitions).	SQM	355			
b)	50mm x 50mm @ 230 mm centre to centre in one direction (vertical) and 230mm centre to centre in other direction (horizontal) or as required as per design intent (for full height and low height curved partitions).	SQM	25			
c)	50mm x 25mm @ 400 mm centre in to centre or as required as per design intent (for wall panelling).	SQM	150			
d)	75mm x 25mm @ 400 mm vertical spacing to match the mullions & horizontally 50mm x 25mm @ 400mm centre to centre for wall panelling.	SQM	50			
	Item include cost towards providing & applying fire retardent anti bacterial paint. All complete as per specifications, drawings, design intent and instructions of the Architect.					
	Notes: For Item No. 2.1					
1	For full height partitions framework shall be provided till the bottom of roof slab and only the visible area shall be measured for payment.					
2	Center to center spacing may vary to make provision for fixing dado rail / to adjust the level of glass or for fixing counter / storage units or otherwise as per site requirement.					
3	No extra payment shall be made for reduction in framework opening as indicated in the drawing or as instructed by the Architect. Framework shall be rigidly secured to floor and ceiling by dash fasteners etc. at maximum 600mm c/c.					
4	For framework of partition / panelling wherever change of material or joint in the skin material occurs, an additional member must be provided for proper strength & shall be of the same section & size as the other frames without any additional payment.					
5	Cost towards skinning and finishing shall be paid for in the relevant item.					
2.2	Providing and fixing to straight partition, panelling framework, First Skin as per following specifications:					

S.No.	Description	Unit	Qty.	Rate (Rs)	Rate (in words)	Amount (Rs)
	12 mm thick BWR Ply. 400mm c/c both ways on the framework. Joints staggered on either sides of the partitions to avoid through joints.					
	All complete as per specifications, drawings, design intent and instructions of the Architect.	SQM	910			
	Note for Item 2.2:					
1.	Net area of BWR ply applied shall be measured for the purpose of payment.					
	2.3 Providing and fixing Second Skin on existing straight / curved partition/panelling as per following specifications:					
	6mm thick Exterior Grade MDF board fixed with suitable adhesive & fully threaded parallel shank screws at max. 400mm c/c both ways. Joints staggered on either sides of the partitions to avoid through joints. Providing grooves of size 6mm x 6mm or as per design intent as specified below or as instructed.	SQM	450			
	All complete as per specifications, drawings, design intent and instructions of the Architect.					
	Notes for Item 2.3:					
1.	Wherever ply / board is applied in more than one layer the joints in each layer shall be staggered. First layer (skin) will be screw fixed and subsequent layers shall be screwed as well as glued with suitable adhesive.					
	2 Net area of ply / board applied shall be measured. For the purpose of payment net rectilinear area shall be measured. Where Ply is applied in more than one layer each layer shall be measured and paid for separately.					
	2.4 Providing and fixing 12mm thick MR Ultra Gypsum board to partition / panelling framework. The edges to be neatly finished with veneer plaster.					
	All complete as per specifications, drawings and instructions of the Architect.	SQM	30			
	2.5 Providing , fixing and finishing in 1.0mm thick laminate over full height /free standing partition / wall paneling / doors / elsewhere as instructed. Laminate shade, pattern & surface finish shall be as follows. The direction of Grain of print / texture and grooves shall be as per design intent. The laminates shall be fixed with adhesive of approved quality. (Basic Price of Laminate Rs 500/- Sqm)	SQM	215			
	All complete as per Manufacturer's specifications, approval and instructions of the Architect.					
	Mode of Measurement: Net area applied shall be measured for payment.					
	2.6 Providing & fixing white ash wood moulding of approx. finished size 19mm x 12mm	R.mtr.	120			
	Mode of Measurement: Net running length shall be measured for payment.					
	2.7 Providing & fixing to curved / straight partition / paneling / doors or elsewhere as instructed melamine pressed 3.5 - 4.0 mm thick Decorative veneer ply of group match and of following origin, making grooves, including protecting with two coats of sealer and two coats of melamine polish.					
	Century : White Oak	SQM	110			

S.No.	Description	Unit	Qty.	Rate (Rs)	Rate (in words)	Amount (Rs)
2.8	Providing , fixing and finishing in 6mm thick exterior grade MDF board over full height /free standing partition / wall paneling / doors / elsewhere as instructed. Laminate shade, pattern & surface finish shall be as follows. The direction of Grain of print / texture and grooves shall be as per design intent. The laminates shall be fixed with adhesive of approved quality. Item also includes providing & fixing White ash wood moulding of approx. finished size 19mm x 12mm	SQM	40			
	All complete as per Manufacturer's specifications, approval and instructions of the Architect.					
	Mode of Measurement: Net area applied shall be measured for payment.					
2.9	Providing & applying wall paper approved equivalent on existing surface with suitable adhesive as per manufacturer's specifications.					
	All complete as per Manufacturer's specifications, approval and instructions of the Architect. Mode of Measurement: For the purpose of payment net area of the surface applied shall be measured.Basic Price of Wall Paper Rs 1250/- Sqm	SQM	30			
2.10	Providing and fixing in position customised Clear Float Glass in partition or elsewhere of following thickness and specifications. Exposed edges of glass to be machine transparent ground.					
i)	10mm thick clear float toughened glass	SQM	25			
	Item includes providing holes / cutouts for patch fittings. Provision for one fitting shall be counted as one unit.					
	All complete as per specifications, drawings, design intent and instructions of the Architect.					
	Mode of Measuremet: For the purpose of payment net rectilinear area of glass used shall be measured.					
2.11	Providing and fixing on glass panes, self adhesive crystal films as per following specifications Ref. 3M Scotchcal Commercial Graphics Cat. Electrocut Crystal films or of approved equivalent make.	SQM	15			
	All complete as per Manufacturer's specifications, approval and instructions of the Architect.					
	Mode of Measurement: For the purpose of payment net area applied shall be measured excluding the wastage.					
2.12	TOUGHENED GLASS PROFILES :- Providing and fixing PR-22 aluminium profile for glass fixing from Ozone. All profiles in 3m length. The glass to be fixed in the profile on floor ceiling levels and side wall. Complete with closing of all joints and complete in all respect as per direction of Engineer-In-Charge. Note: Only installed lengths to be measured.	RMT	25			
2.13	Providing and fixing in position Planilaque glass 4mm thk. of various colours ref. St. Gobain Glass.Fixing with 3M double sided tape. Sealing the edges with transparent silicon sealant bead.					
	All complete as per Manufacturer's specifications, approval and instructions of the Architect.	SQM	5			

S.No.	Description	Unit	Qty.	Rate (Rs)	Rate (in words)	Amount (Rs)
	TOTAL PARTITIONS AND WALL PANELLING carried over to Summary of Furniture					
III	DOORS / WINDOWS					
3.1	Providing and fixing moulded White Ash Wood frames of doors, and other frames of sizes 125 x 65mm as per design. All complete as per specifications, drawings, design intent and instructions of the Architect. Wood to be polished in Polyurethane clear transparent high gloss ref. ICA cat. LP5771	R.mtr.	75			
3.2	Providing and fixing White Ash Wood architrave to chowkhat and wall / partition of finished size 37mm x 19mm, moulded to shape. All complete as per specifications, drawings, design intent and instructions of the Architect.	R.mtr.	15			
	Mode of Measurent:					
	For the purpose of payment the architrave shall be measured along the center line in one go.					
3.3	Providing and fixing in position flush door shutter as per following specifications :					
	40mm thick non decorative, factory made flush doors as per technical specifications.					
	Item includes all edges of shutter to be sealed with 6 mm thick Oak wood /Wenge wood edging slip on all sides. Wood protected with two coats sealer and two coats of melamine (matte) polish. All complete as per specifications, design intent and instructions of the Architect.. Shutter Size upto 1M X 2.4 M Each shutter to be provided with 75mm long butt hinges S.S. brush finish (3 nos. per shutter),All complete as per specifications, design intent and instructions of the Architect.	Each	8			
	Notes for item 3.3:					
1.	Cost of either side of finishing to be measured in the relevant item.					
2.	Mode of Measurent					
	Front area from one side to be measured for the purpose of payment.					
3.4	Providing and fixing Flush door (for Pantry etc.) with peep window and sizes as per drawing and following specifications:					
	40mm thick non decorative, factory made flush doors as per technical specifications.					
	Glass					
	10mm thick Clear float toughened glass of size 300 x 550mm fixed with ivory coast edging					
	Finish					
	Both faces of door finished in 1.0mm thick Laminate using water resistant adhesive Araldite.					
	All wooden edging finished in 2 or more coats of duco paint.	Nos	1			

S.No.	Description	Unit	Qty.	Rate (Rs)	Rate (in words)	Amount (Rs)
3.5	DOUBLE LEAF GLAZED DOOR - Providing & fixing double leaf glazed door of size approximately, 2000mm x 2400mm fabricated with 12mm thk toughened glass all sides edge polished to be fixed on patch fittings of Dorma or equivalent make. Cost of the door to be inclusive of pre-approved H-Type 600mm long handles and floor lock (dorma or equivalent) to be fitted horizontally/ vertically as per instructions & patch fitting(s) lock(s),floor spring(s),, etc., all complete and including making necessary holes in the glass for Access control locks, complete with all respect with all hardware & Architect instructions.	EACH	5			
3.6	SINGLE LEAF GLAZED DOOR - Providing & fixing single leaf glazed door of size approximately, 1000mm x 2400mm fabricated with 12mm thk toughened glass all sides edge polished to be fixed on patch fittings of Dorma or equivalent make. Cost of the door to be inclusive of pre-approved H-Type 600mm long handles and floor lock (dorma or equivalent) to be fitted horizontally/ vertically as per instructions & patch fitting(s) lock(s),floor spring(s), etc., all complete and including making necessary holes in the glass for Access control locks, complete with all respect with all hardware & Architect instructions. Entrance door.	EACH	10			
3.7	Supplying and Fixing Hardware as per following specifications with necessary screws, etc. complete. All complete as per specifications, drawings, design intent and instructions of the Architect.					
a)	Door closer HS refer Hafele Cat.no. 931.84.419	Each	6			
b)	Door stoppers ref. hafele cat. 937.53.130	Each	6			
c)	Door handle with Lever, mortice and cylinder Ref.Hafele Cat. 903.99.057 CAPO matt finish handles with Mortise lock, double cylinder (Keys bothside)	Each	6			
d)	Door handle with Lever, mortice and cylinder for toilets Ref. Hafele Cat. Art. No. 903.99.057 CAPO matt finish handles with lever handle, thumb turn cylinder having key outside & thumb turn inside.	Each	2			
e)	Stainless steel Lift Off Rising Hinge,Left/Right Hand hinges. Ball Bearing Hinges ref. Hafele cat. 926.79.003	Each	8			
f)	Stainless steel swing hinge double action 152mm ref. Hafele cat. 927.93.103	Each	3			
	TOTAL OF DOORS / WINDOWS carried over to Summary of Furniture					
IV	WINDOW DRAPERY					

S.No.	Description	Unit	Qty.	Rate (Rs)	Rate (in words)	Amount (Rs)
4.1	Providing and fixing Roller Blinds of approved brand in the windows with manual operation as follows :					
a)	Ref. Mac. Cat. London mist LM 724 or of approved equivalent.	SQM	180			
	All complete as per specification, drawing, design intent and approved and instruction of the Architect.					
	Note :- Front rectilinear area shall be measured for the purpose of payment.					
	TOTAL OF WINDOW DRAPERY carried over to Summary of Furniture					
V	STORAGES					
5.1	Descriptions					
	PANTRY STORAGE (BELOW/ABOVE COUNTER)					
	Dimensions					
	600MM deep and length as per site.					
	Framework					
	19mm x 32mm (finished size) hard wood frame work.					
	Shutters					
	19mm thick post-formed laminated board. Post-forming on two longer sides and PVC edge banding on balance sides. Front side laminated in approved colour and counter side in white colour.					
	Shelving / Vertical Partition					
	19mm thick post-formed laminated board. PVC edge banding on all sides. Front side laminated in approved colour and counter side in white colour. The vertical Partitions shall be provided at upto 750 centre to centre spacing on there shall be one shelf between the part.					
	Top					
	Counter top finished in black galaxy granite					
	Handles & Accessories					
	75mm long auto-closing stainless steel hinges ref. Hettich cat. Ecomat-0 Crank (3nos. per shutter). Cut out in the shutter to act as pull handle neatly finished in wood.	RM	7			
5.2	P/F over counter storage unit upto 300mm depth and 700mm high made out of 19 mm BWR ply for verticals, top, bottom, and intermediate vertical partitions @600 c/c or part thereof and backing of 6 mm th. BWR ply. The inside ,top & exposed sides of storage to be finished with 1mm thick laminate and complete in all respects as per design. The width of each module shall be upto 750 & there shall be 1 to 2 shelves per module.	SQM	20			
5.2	FULL HEIGHT STORAGE-CB1 (Drg no. D-02)					
	Carcasse:					

S.No.	Description	Unit	Qty.	Rate (Rs)	Rate (in words)	Amount (Rs)
	25mm thick pre laminated board (both sides laminated). All visible sides laminated in 1 mm th. laminate Sunmica Wood Series; Code No. WP 133; Rusted Urban Teak . / approved equivalent and inside side in 0.8mm th.white colour laminate . Edge profile matching to the printed laminate.The width of each storage module shall be upto 1000mm and the depth of storage shall be upto 450mm					
	Shelving:					
	19 mm thick pre laminated board (both sides laminated). Both side laminated in approved in 0.8 white colour. All shelves resting on S.S studs. The spacing of shelves shall be 450 mm. Edge profile matching to the printed laminate.					
	Back:					
	19mm thick pre laminated board (both sides laminated).One sides laminated in 0.8 mm th. white colour laminate.					
	Shutter:					
	19mm thick pre laminated board (both sides laminated) with postformed edges. Front side 1mm th. laminate Ref. Rusted Urban Teak Sunmica Cat. Wood Series; Code No. WP 133; ./ approved equivalent and counter side in white colour. All vertical edges shall be postformed as per approved profile.All other edges shall be provided with matching PVC edge banding . Grooves in shutter shall be provided and grain direction shall be as per design intent.					
	Handles & Accessories:					
	Shutters having 331 mm long Aluminium handles(one per shutter) ref. Hettich cat.9071082. Four no.s Auto closing Hinges per shutter with Dampner ref. Hettich cat. no.73913+72983+60581.Shelves rest on S.S. Studs.					
	3 nos. tower bolts for every pair of shutters, Locks for storage shutters with a set of keys Ref. hettich cat.no. 72251+72253+9078951+9078620.					
	All complete as per drawing, approval and instructions of the Engineer- in- charge.	SQM	80			
	5.3 OVERHEAD STORAGE CB2 (Drg. No. D-03)					
	Carcasse:					
	Includes back ,base and two sides.25mm thick pre laminated board (both sides laminated).Doubled edges by adding 18 mm exterior grade MDF Board to the 25mm thick pre laminated board back. All edges & visible sides of carcasse laminated in approved colour Ref. Rusted Urban Teak Sunmica Cat. Wood Series; Code No. WP 133 / approved equivalent and counter side in white colour laminate. The width of each storage module shall be upto 1000mm and the depth of storage shall be upto 450mm					
	Shelving:					
	19 mm thick pre laminated board (both sides laminated). One side laminate Ref. Rusted Urban Teak Sunmica Cat. Wood Series; Code No. WP 133.; / approved equivalent and counter side in white colour laminate. All shelves resting on S.S studs. Edge profile matching .					
	Top skirting:					
	Doubled edges by adding 18 mm exterior grade MDF Board to the 25mm thick pre laminated board back.Wrapped in 0.8mm thk. Laminate,on two sides.					

S.No.	Description	Unit	Qty.	Rate (Rs)	Rate (in words)	Amount (Rs)
	Shutter:					
	19mm thick pre laminated board (both sides laminated) with postformed edges. Front side laminate Ref. Rusted Urban Teak Sunmica Cat. Wood Series; Code No. WP 133.; /approved equivalent .Counter side in white colour .8 mm th laminate. All vertical edges shall be postformed as per approved profile.All other edges shall be provided with matching PVC edge banding . Grooves in shutter shall be provided and grain direction shall be as per design intent.					
	Handles & Accessories:					
	Shutters having 331 mm long Aluminium handles(one per shutter) ref. Hettich cat.9071082. Four no.s Auto closing Hinges per shutter with Dampner ref. Hettich cat. no.73913+72983+60581.Shelves rest on S.S. Studs.					
	1 nos. tower bolts for every pair of shutters, Multipurpose Locks for storage shutters with a set of keys Ref. hettich cat.no. N6100.					
	All complete as per drawing, approval and instructions of the Engineer- in- charge.	SQM	20			
5.4	COMPACTORS					
	Supplying and installing in position fully knockdown , non welded Compact storage unit of which each module consists of the following type of units : (1) Single Faced fixed Unit. (2) Single Faced Mobile Unit. (3) Double Faced Mobile Unit. Each of these units shall be 915mm(w), 457mm(d) rigid Knock Down construction made out of 0.8 thk. CRCA Steel conforming to IS: 513 Grade..These units shall have 5 loading levels. The shelves will be adjustable at a pitch of approximately 25mm with suitable hardware. The overall height of the standard module is 2080mm from the bottom of the under carriage to the top of the module.					
	These modules are fabricated in the factory with knock down construction covered from all the sides. The sheet used is cold rolled low carbon sheet & strips with thickness not less than 0.8mm for the vertical back, side walls, top cover & horizontal shelves of bodies. The construction of the units shall be such that protection against dust & insects are provided by suitable overlapping of sheets & adequate pressing of joint. The allowable dimensional tolerance of the overall size of the body is (+/-) 3mm & similar variation of bending is not more than (+/-) 5 degrees.system). Finish : The bodies including shelves are given antirust surface treatment & are powder coated with epoxy polyester powder. It involves an 8 step treatment consisting of Hot water rinse, Knock of degreasing, degreasing, cold water rinse, phosphating, cold water rinse, and passivation & dry off oven treatment. Final finish consists of epoxy polyester powder coating of approved color & shade with a Dry Film Thickness of minimum 40 microns. The testing of paint is done for various physical & chemical properties as per IS: 101. The material is then oven baked with a controlled temperature of 180 deg.C to 200 deg.C.	Modules	4			
	TOTAL OF STORAGES carried over to Summary of Furniture					
6	MODULAR PARTITIONS /WORKSTATIONS / TABLES					
	Note :- All the items under this sub-head are to be of Modular design, factory built and as per approved vendor list.					
6.1	MODULAR PARTITION (Drg no. D-1a)					

S.No.	Description	Unit	Qty.	Rate (Rs)	Rate (in words)	Amount (Rs)
	Design, fabrication, supply and installation of following factory made modular furniture for open office workstation system					
6.01	<p>Cubical self support flush Panel/ Sliding Type tile based 2 Module partition panels 45-53 mm thick forming part of the open office workstation modular furniture system, for a total height of average 1220 mm (recommended module of 650mm + 450mm + 100 mm + 20 mm) consisting of concealed raceways of 100 mm width at bottom level and 100 mm width at the intermediate level, as per requirement including necessary frames, top caps, adjustable bolts, raceways cover plates etc. complete. The frames and partitions to have provisions and flexibility to form 2-way, 3- way or 4-way configurations by means of connection posts. . The partition inner frame is 1.2-1.5 mm thickness Aluminium Frame .Horizontal and vertical trims shall be 1.2 -1.5 mm average thick aluminium powder coated with 40-50 micron PolyPropelene Co- Polymer coating.The aluminium trims shall be elegantly fixed with hidden connectors on the partition.The frame shall be fitted with 8-9 mm thick prelaminated particle board tiles of approved shade. surface finishes shall be FABRIC, LAMINATE & MARKER GLASS.Double sided 4-5 mm thick toughned glass tiles can be fitted to any module frame & are completely interchangeable with regular tiles at any time and shall be fitted with frosted vinyl backing 3M or equivalent as approved . .The levelling bolt M8 or equivalent approved adjustment shall be used for adjusting the unevenness of floor. The bottom skirting is 95-110 mm high made of aluminium plates/CRCA steel as per IS:513 powder coated with Epoxy - Polyester finish (between 40-50 microns) finish. Partition shall have provision for pin-up board with fabric /white marker/laminated board of approved shade The complete partition work shall be carried out as per following type and pattern . The product should be from BIFMA and certified company.</p>					

S.No.	Description	Unit	Qty.	Rate (Rs)	Rate (in words)	Amount (Rs)
6.01(a1)	Partitions with panels finished on both sides with laminated finish up to work surface level and rest above with 4-5 mm thick double skin approved make Marker glass panels up to 1220 mm height with raceways at the bottom and at work surface level (Panel width 675mm),as approved drg no. D-05	SQM	20			
6.01(a2)	Partitions with panels finished on both sides with laminated finish up to work surface level and rest above with 4-5 mm thick double skin approved make Marker glass panels up to 1220 mm height with raceways at the bottom and at work surface level frosted vinyl backing 3M or equivalent as approved (Panel width 750 mm) ,as perdrawing no. D-06	SQM	5			
6.01(a3)	Partitions with panels finished on both sides with laminated finish up to work surface level and rest above with 4-5 mm thick double skin approved make Marker glass panels up to 1220 mm height with raceways at the bottom and at work surface level (Panel width upto 600 mm),as approved drawing no. D-04	SQM	10			
6.01 (b1)	Partitions with panels finished on both sides with laminated finish up to work surface level and rest above with both-side fabric covered over soft board up to 1220 mm height with raceways at the bottom and at work surface level. (Panel width 675-750 mm),as approved drawing no. D-05	SQM	20			
6.01 (b2)	Partitions with panels finished on both sides with laminated finish up to work surface level and rest above with both-side fabric covered over soft board up to 1220 mm height with raceways at the bottom and at work surface level. (Panel width 800- 900 mm),asapproved drawing no. D-06	SQM	5			
6.01 (b3)	Partitions with panels finished on both sides with laminated finish up to work surface level and rest above with both-side fabric covered over soft board up to 1220 mm height with raceways at the bottom and at work surface level. (Panel width 600mm),asapproved drawing no. D-04	SQM	10			
6.01 (b4)	Partitions with panels finished on both sides with laminated finish up to work surface level and rest above with both-side fabric covered over soft board up to 1220 mm height with raceways at the bottom and at work surface level. (Panel width 1000-1100mm),as approved drawing no. D-07	SQM	5			
6.01 (c1)	Partitions with panels finished on both sides with laminated finish up to work surface level and rest above with both side with laminated finish up to 1220 mm height with raceways at the bottom and at work surface level. (panel width 750 mm),as approved drawing no. D-05	SQM	20			
6.01 (c2)	Partitions with panels finished on both sides with laminated finish up to work surface level and rest above with 4-5 mm thick double skin approved make transparent toughened glass panels without frosted vinyl backing up to 1220 mm height with raceways at the bottom and at work surface level (Panel width 600mm-750 mm),as approved drawing no. D-04	SQM	10			
6.2	MODULAR TABLE TOP/WORK SURFACE					

S.No.	Description	Unit	Qty.	Rate (Rs)	Rate (in words)	Amount (Rs)
6.02	Providing & fixing 25 mm thick exterior grade board post formed laminated workstation table top with post formed half round front edging and balancing lamination at bottom surface as per the following sizes with necessary brackets, fixing arrangements etc. Gable ends made of 25 mm thick exterior grade board post formed pre-laminated particle board etc. with necessary CRCA Steel grade D steel as per IS:513 powder coated brackets etc Gable ends shall be made of 25 mm thick interior grade Board postformed laminates . Non working /back edges to of both ends of Gable and work top to have straight edges machine pressed with 2mm thickPVC tape lipping glued with hot melt EVA glue					
6.02 (a)	Work surface of shape linear type (1200 mm X600 mm) provided with 65-70 mm DIA circular cutout and covered with ABS covers as approved	Each	20			
6.02 (b)	Work surface of shape L type (1350 mm X600 mm +750mm x 525 MM) provided with 65-70 mm DIA circular cutout and covered with ABS covers as approved drawing no. D-05	Each	25			
6.02 (c)	Work surface of shape L type (1500 mm X750 mm +900mm x525 MM) provided with 65-70 mm DIA circular cutout and covered with ABS covers as approved drawing no. D-06	Each	14			
6.02 (d)	Work surface of shape linear type (1050 mm X600 mm) provided with 65-70 mm DIA circular cutout and covered with ABS covers as approved	Each	16			
6.3 COMPUTER TABLE						
6.03 (a)	Providing and Placing in position 2 Seater Table. Overall size shall be 1500 Width mm x 600 Depth mm x 680 Height mm. Top shall be 25 mm thick(+/-1mm) , Base material shall be 25 mm thick pre-laminated particle board plus 2 mm thick PVC edge banding on straight outer edges. The Modesty shall be 18 mm thick(+/-1mm) its base material shall be 16 mm Plain particle board plus post - laminated with 0.6 mm top laminate on either side 2 mm thick and 0.8 mm thick PVC edge banding of matching colour on outer edges of modesty. Legs shall be made from 1.6 mm Matt silver anodized aluminium extrusion. Legs assembeled together with 8 mm thick MS Powder coated plate at top. The base support plate is having provision for wire entry and glide fixing. The wire carrying is facilitated through the hollow space between two leg extrusions and the wires are concealed between removable rigid PVC extrusion in the leg. Max . 20 nos. of Dia 6 wires can be passed through the space between two leg extrusions. Table Support brackets shall be powder coated table support brackets made from 2 mm thick MS sheet provided for overall product stability. Stopper shall be powder coated made from 1.5 mm thick aluminium extrusion fixed with work - surface by powder coated stopper bracket made from 3 mm thick MS sheet. Both ends of Aluminium extrusion covered with plastic moulded end cap. The Grommet shall be made from plastic moulded components to facilitate access electrical / data / voice sockets access from top. The Switch Mounting tray shall be powder coated made from 0.8 mm and 2 mm thick MS sheet fitted with modesty through which cables can be passed. as approved drawing D-13.	Each	8			

S.No.	Description	Unit	Qty.	Rate (Rs)	Rate (in words)	Amount (Rs)
6.03 (b)	Providing and Placing in position 3 Seater Table. Overall size shall be 2700 Width mm x 600 Depth mm x 680 Height mm. Top shall be 25 mm thick(+/-1mm) , Base material shall be 25 mm thick pre-laminated particle board plus 2 mm thick PVC edge banding on straight outer edges. The Modesty shall be 18 mm thick(+/-1mm) its base material shall be 16 mm Plain particle board plus post - laminated with 0.6 mm top laminate on either side 2 mm thick and 0.8 mm thick PVC edge banding of matching colour on outer edges of modesty. Legs shall be made from 1.6 mm Matt silver anodized aluminium extrusion. Legs assembled together with 8 mm thick MS Powder coated plate at top. The base support plate is having provision for wire entry and glide fixing. The wire carrying is facilitated through the hollow space between two leg extrusions and the wires are concealed between removable rigid PVC extrusion in the leg. Max . 20 nos. of Dia 6 wires can be passed through the space between two leg extrusions. Table Support brackets shall be powder coated table support brackets made from 2 mm thick MS sheet provided for overall product stability. Stopper shall be powder coated made from 1.5 mm thick aluminium extrusion fixed with work - surface by powder coated stopper bracket made from 3 mm thick MS sheet . Both ends of Aluminium extrusion covered with plastic moulded end cap. The Grommet shall be made from plastic moulded components to facilitate access electrical / data / voice sockets access from top. The Switch Mounting tray shall be powder coated made from 0.8 mm and 2 mm thick MS sheet fitted with modesty through which cables can be passed.	Each	5			
6.4 PEDESTAL/ MOBILE DRAWER UNIT:						
6.04 (a)	Fabricating supplying and placing in position pedestal drawer units of approximate size 500 mm deep 450 mm wide and 635-680 mm high consisting of four no drawer units . The unit shall be fabricated out of 18mm thick pre laminated particle board interior grade in approved make and shade having four no drawers of equal size .All working or non working edges shall be provided with machine pressed 2mm thick PVC edging using special hot melt EVA glue at hot temperature.The drawers shall be made out of 12mm prelaminated board and the back of unit to be made up of 8mm thick prelaminated board. Each Drawer shall run on metallic roller channels and shall have SS Handles in D shape as per approval .Each drawer shall have proper locking arrangement with with triplicate keys and smooth sliding arrangements.	Each	4			
6.04 (bi)	Fabricating supplying and placing in position pedestal drawer units of approximate size 500 mm deep 450 mm wide and 635-680 mm high consisting of two drawer units of upto 125mm height each and 1 no filing drawer at bottom. The unit shall be fabricated out of 18mm thick pre laminated particle board interior grade in approved make and shade having four no drawers of equal size .All working or non working edges shall be provided with machine pressed 2mm thick PVC edging using special hot melt EVA glue at hot temperature. The drawers shall be made out of 12mm prelaminated board and the back of unit to be made up of 8mm thick prelaminated board. Each equal sized drawers shall run on metallic roller channels and shall have SS Handles in D shape as per approval . The units shall have proper central locking arrangement with single key hole with triplicate keys and smooth sliding arrangements.	Each	55			
6.04 (bi)	Same as above but with 2 lockable & 2 without lock castors.	Each	5			

S.No.	Description	Unit	Qty.	Rate (Rs)	Rate (in words)	Amount (Rs)
6.04 (c)	Fabricating supplying and placing in position with mobile pedestal drawer units of approximate size 500 mm deep 450 mm wide and 635-680 mm high with 2 lockable & 2 without lock castors, consisting of two drawer units at the top and one file unit at the bottom. The unit shall be fabricated out of CRCA steel sheets of 20 gauge thickness for body & 18 gauges thick for shutters and shall be powder coated. The units shall have proper central locking arrangement with single key hole with triplicate keys and smooth sliding arrangements.	Each	4			
6.5 STORAGE UNIT						
6.05	Supplying, and placing in position the modular storage unit with top made from 18 mm thick pre-laminated particle board and rest of the sides as well as shelves and shutter made up of 18 mm thick pre-laminated particle board while back to be made of 8 mm thick pre-laminated particle board. All edges to be provided with 2 mm thick PVC lipping using special hot melt EVA glue at hot temperature . Each unit to have openable shutters with locking provision and shall have SS Handles in D shape as per approval .Two shelves shall be provided per unit The product should be from BIFMA and FSC certified company.					
6.05 (a)	LX H X D (1200x 1200 x 450)	Each	1			
6.05 (b)	LX H X D (900x 1200 x 450)	Each	1			
6.06 (c)	LX H X D (750x 1200 x 450)	Each	1			
6.06	Back Storage Unit- Providing & Fixing Back Storage Unit with top made of 25mm thick prelaminated particle board having decorative laminate on top and balancing laminate on unexposed face, and understructure made of 18mm prelaminated particle board having sliding shutters running on sliding channels. All exposed edges are sealed with 2mm thick PVC edge banding tape and all unexposed edges sealed with 0.6mm edge banding tape pressed with hot melt glue on special machines.One shelf shall be provided per unitThe unit is provided with proper locking arrangement shall have SS Handles in D shape as per approval . All channels out of metal. PVC Channels will not be accepted. The typical module of storage shall be LX H X D (900x 680 x 450)	SQM	15			
6.6 COMPUTER KEY BOARD:						
	Fabricating, supplying and fixing in position sliding computer key board tray of 500 X 250 X 75 (depth) mm made out of CRCA steel as per IS:5131 20 gauge power coated section, with sliding channel and other fixtures and fittings etc, with integral space to accommodate mouse etc, complete.	Each	60			
6.7 CONFERENCE / DINING TABLE						

S.No.	Description	Unit	Qty.	Rate (Rs)	Rate (in words)	Amount (Rs)
6.07 (a)	<p>Providing and Placing in position Modular Conference Table.Overall size shall be 2000 lengthx 1800 widthx 740 height. Top shall be 25 mm thick +/- 1.5mm (25mm + 12 mm MDF board + 0.4mm membrane foil). The Squeeze Leg Assembly shall be nickel chrome plated made from Dia 50.8 x 1.6 mm thick MS ERW tube . Leg Assebeled together with a plastic glide at bottom and a powder coated leg connector made from aluminium alloy at top. Squeeze Leg Assembly and connectors are assebeled together to strengthen complete understructure . Laminate Modesty shall be 18 mm thick PLT +/-1mm or shall be 16 mm Plain particle board . Post - Laminated with 0.6 mm Top laminate on either side also there shall PVC edge banding of matching colour on all sides . Work surface and Modesty are assebeled together with powder coated Modesty bracket made from 2 mm thick CR steel IS:513 . Metal Perforated Modesty shall be 18 mm thick Powder coated(DFT 40-60 microns) metal perforated modesty with stiffener made from 0.8 mm thick CR steel IS:513 . Work surface and Modesty are assebeled together with powder coated Modesty bracket made from 2 mm thick CR steel IS:513 . The Access Flap and Switch Mounting Tray shall be made from Matt silver anodized aluminium extrusion and plastic moulded components to facilitate access of electrical/ data /voice sockets access from top . Powder coated switch mounting tray made from 0.8 mm/ 1.5 mm CR steel IS:513 .Switches to be mounted on tray as per requirement . Provision for mounting 8 module anchor Roma switch plate on switch-mounting tray. The flexible wire carrier is fixed to work surface from bottom side for holding wires. The wire carrying is facilitated through the hollow space between hollow space between plastic components. (Size 2750 mm LengthX 1200mm Width X 740mm Height), as approved drawing no. D-14.</p>	Each	1			
6.07 (bi)	<p>Providing and Placing in position Meeting Table.overall size shall be 2100 lengthx750widthx 740 height. Top shall be 25 mm thick +/- 1.5mm (25mm + 12 mm MDF board + 0.4mm membrane foil). The Squeeze Leg Assembly shall be nickel chrome plated made from 40 mm square x 1.6 mm thick MS ERW tube . Leg Assebeled together with a plastic glide at bottom and a powder coated leg connector made from aluminium alloy at top. Squeeze Leg Assembly and connectors are assebeled together to strengthen complete understructure The Access Flap and Switch Mounting Tray shall be made from Matt silver anodized aluminium extrusion and plastic moulded components to facilitate access of electrical/ data /voice sockets access from top . Powder coated switch mounting tray made from 0.8 mm/ 1.5 mm CR steel IS:513 .Switches to be mounted on tray as per requirement . Provision for mounting 8 module anchor Roma switch plate on switch-mounting tray. The flexible wire carrier is fixed to work surface from bottom side for holding wires. The wire carrying is facilitated through the hollow space between hollow space between plastic components. (Size 1500 mm LengthX 1000mm Width X 740mm Height) as approved</p>	Each	1			
6.07 (bii)	<p>Same as above but the Size 2000 mm LengthX 750mm Width X 740mm Height</p>	Each	1			

S.No.	Description	Unit	Qty.	Rate (Rs)	Rate (in words)	Amount (Rs)
6.07 (biii)	Providing and Placing in position Dining Table. Overall size shall be 1135 Width mm x 1175 Depth mm x 750 Height mm. Top shall be 25 mm thick(+/-1mm) base material shall be 25 mm MDF board. Table top with post formed in approved laminate shade with half round front edging and balancing lamination at bottom surface, fixing arrangements Top to have straight edges machine pressed with 2mm thickPVC tape lipping glued with hot melt EVA glue. Brown Laminate on bottom specially profiled edges for comfort. The Understructure and tle legs shall be having bend pipe structure of Nickel Chrome Plated Pipe dia 38 mm , 2 mm thick and it shall be fitted with top by SS machine screws. . Glide shall be of Plastic fixed at the understructure to prevent the damage of table top during stacking. as approved drawing no. D-16	Each	6			
6.6 NON MODULAR TABLES						
6.06	Providing following tables out 3/4" commercial board of approved make. With top in 4mm vineer (Vineer @ Base Price Rs 150 Sft) PU finsh. Sides out of 3/4" comercial board and back out of 1/4" commercial ply. All visible front and sides including insides to have 1.0 mm premimum laminate of approved shade, and with 4" high mettalic laminate , as per sample. Inside all visible surfaces and drawers ,storages to have laminate 0.8 mm thick inapproved colour. Commercial board to have hot pressed PVC edging. All hardware of approved make. Ready made metal keyboard drawer of approved make. two storage units with each having three drawer of different sizes with " metabox " sides, of approved make. Three drawers to have single locking mechanism. Handles out of SS, of approved make, as per approved sample. Including providing and fixing cable managers.Complete as per drawing and directions.					
6.06a	Table (2100 mm X850 mm + 900mm x 450 MM) (Drg No 11)	Each	1			
6.07	Providing following tables out 3/4" commercial board of approved make. and 1.5mm thick laminate top of approved shade and make. Sides out of 3/4" comercial board and bck out of 1/4" commercial ply. All visible front and side to have 1.0 mm laminate of approved shade, and with 4" high mettalic laminate , as per sample. Inside surfaces to have white laminate 0.8 mm thick. Commercial board to have hot pressed PVC edging. All hardware of approved make. Ready made metal keyboard drawer of approved make. Three drawer of different sizes with " metabox " sides, of approved make. Three drawers to have single locking mechanism. Handles out of SS, of approved make, as per approved sample. Including providing and fixing cable managers.Complete as per drawing and directions.					
6.07a	Officer table (1800 mm X750 mm + 900mm x 450 MM) (Drg No 10)	Nos.	3			
6.07b	Teacher Table (1350 mm X600 mm Drg No 9)	Nos.	2			
6.8 Reception desk						
Dimension- 1200 Lengthx750 Widthx 750 Height						
As per Drawing no. D-12						
Framework For Base						
19mm thick P.F. board top with 19mm P.F. board framework.Wooden packing at edges as per design intent (wherever reqd.)						

S.No.	Description	Unit	Qty.	Rate (Rs)	Rate (in words)	Amount (Rs)
	Base finish					
	3.5mm decorative melamine pressed Sucupira veneer ply alround. All corners and edges would be mitered . Bottom and inside of table base shall be finished in laminate.					
	Visitor Panel Finish:					
	As per Drawing no. D-12					
	Key board tray					
	Prefab metallic key board tray					
	Mobile Unit					
	Fixed drawer fronts made out of 19mm thick BWR board. Drawer body made out of 12mm thick BWR plywood. All edges of carcasse,external Carcasse (alround excluding bottom & top side) shall be finished in 3.5 mm th. decorative veneer ply Sucupira.Drawer fronts finished in Cerejera vineer ply. inside surfaces of carcasse and drawers shall be finished with 1.0mm thick laminate					
	FINISH					
	Wood & veneer protected by 1 coat of base coat and top coat of acrylic (clear gloss).All hidden surfaces left without lamination to be finished with spirit polish. All complete as per drg, approval and instructions of the Engineer – in – charge.	Each	1			
	TOTAL OF MODULAR PARTITIONS WORKSTATIONS / TABLES carried over to Summary of Furniture					
VII	CHAIRS AND SOFAS					
7.1	Providing and Placing in postion Dining Chairs. The seat and back are made up of injection moulded high impact strength polypropylene polymer with indoor gate UV resistance. The dimensions of Back shall be 51.6cm. (W) X 40.5cm. (H) and of seat shall be 52.5cm. (W) X 53.2cm. (D). The Tubular welded frame is made of made of 3.5±0.03cm x 1.5±0.03cm x 0.12±0.0128cm thk M.S. E.R.W. tube and welded connecting tube made of dia 2.22±0.03cm x 0.12±0.0128cm thk stainless steel 202 grade tube. The tubes are buff polished to give shiny finish. The shoes are made of high impact strength polypropylene polymer compound with indoor grade UV resistance and pressed fitted with tubular frame. as per drg no. D-17	Each	30			

S.No.	Description	Unit	Qty.	Rate (Rs)	Rate (in words)	Amount (Rs)
7.2	<p>Providing and Placing in position Very High Back Chair. The seat and back shall be made up of 1.2+/-0.1cm thick hot pressed plywood and upholstered with fabric and moulded polyurethane foam with PVC lipping all around. The moulded polyurethane foam shall be of density 45+/-2kg/m³, and hardness load 16+/-2kgf as per IS:7888 for 25% compression. The dimensions of seat shall be- 56.0cm(W) x 49.0cm(D) and of back shall be 56.0cm(W) x 88.0cm(H).The one-Piece armrests should made of black integral skin polyurethane with 50-70 shore 'A' Hardness and reinforced with M.S insert. The armrests shall bescratch and weather resistant. The armrests shall be fitted to the seat with seat/armrest connecting strip assembly made of 0.5+/-0.05cm thick HR steel. The mechanism of the chair shall have following features : 360 revolving type, Center tilt synchro mechanism, Tilt tension adjustment, Upright positfon locking, 17 degree+/-2 maximum tilt on pivot at center. The chair shall be provided with pneumatic height adjustment which shall have stroke of 12.0 +/- 0.3 cm. The bellow should be 3 piece telescopic type and injection moulded in black polypropylene. The pedestial shall be injection moulded in black 33% glass-filled Nylon-66. It shall be fitted with 5 nos twin wheel castor. The size of the pedestal shall be 66.3+/- 0.5 cm pitch-centre-dia (76.3 +/- 1.0 cm with castors). The twin wheel castors shall be made black nylon. Overall dimensions of Chair shall be, Width of Chair - 76.3cm, Depth of Chair - 76.3 cm as measured from pedestal below. Height from ground - min 117.5cm to max 129.5cm. Seat height - min 41.0 to max 53.0cm. as per drg no. D-17</p>	Each	4			
7.3	<p>Providing and Placing High Back Chair. The seat and back shall be made up of 1.2+/-0.1cm thick hot pressed plywood and upholstered with fabric and moulded polyurethane foam with PVC lipping all around. The moulded polyurethane foam shall be of density 45+/-2kg/m³, and hardness load 16+/-2kgf as per IS:7888 for 25% compression. The dimensions of seat shall be- 49.0cm(W) x 44.0cm(D) and of back shall be 49.0cm(W) x 71.0cm(H).The one-Piece armrests should made of black integral skin polyurethane with 50-70 shore 'A' Hardness and reinforced with M.S insert. The armrests shall bescratch and weather resistant. The armrests shall be fitted to the seat with seat/armrest connecting strip assembly made of 0.5+/-0.05cm thick HR steel. The mechanism of the chair shall have following features : 360 revolving type, Center tilt synchro mechanism, Tilt tension adjustment, Upright positfon locking, 17 degree+/-2 maximum tilt on pivot at center. The chair shall be provided with pneumatic height adjustment which shall have stroke of 12.0 +/- 0.3 cm. The bellow should be 3 piece telescopic type and injection moulded in black polypropylene. The pedestial shall be injection moulded in black 33% glass-filled Nylon-66. It shall be fitted with 5 nos twin wheel castor. The size of the pedestal shall be 66.3+/- 0.5 cm pitch-centre-dia (76.3 +/- 1.0 cm with castors). The twin wheel castors shall be made black nylon. Overall dimensions of Chair shall be, Width of Chair - 76.3cm, Depth of Chair - 76.3 cm as measured from pedestal below. Height from ground - min 100.0 to max 112.0cm. Seat height - min 41.0 to max 53.0cm, as per drg no. 17.</p>	Each	12			

S.No.	Description	Unit	Qty.	Rate (Rs)	Rate (in words)	Amount (Rs)
7.4	<p>Providing and Placing Medium Back Chair. The seat and back shall be made up of 1.2+/- 0.1cm thick hot pressed plywood and upholstered with fabric and moulded polyurethane foam with PVC lipping all around. The moulded polyurethane foam shall be of density 45+/- 2kg/m³, and hardness load 16+/-2kgf as per IS:7888 for 25% compression. The dimensions of seat shall be- 49.0cm(W) x 44.0cm(D) and of back shall be 49.0cm(W) x 47.0cm(H).The one-Piece armrests should made of black integral skin polyurethane with 50-70 shore 'A' Hardness and reinforced with M.S insert. The armrests shall bescratch and weather resistant. The armrests shall be fitted to the seat with seat/armrest connecting strip assembly made of 0.5+/-0.05cm thick HR steel. The mechanism of the chair shall have following features : 360° revolving type, Center tilt synchro mechanism, Tilt tension adjustment, Upright position locking, 17 degree+/-2 maximum tilt on pivot at center. The chair shall be provided with pneumatic height adjustment which shall have stroke of 12.0 +/- 0.3 cm. The bellow should be 3 piece telescopic type and injection moulded in black polypropylene. The pedestal shall be injection moulded in black 33% glass-filled Nylon-66. It shall be fitted with 5 nos twin wheel castor. The size of the pedestal shall be 66.3+/- 0.5 cm pitch-centre-dia (76.3 +/- 1.0 cm with castors). The twin wheel castors shall be made black nylon. Overall dimensions of Chair shall be, Width of Chair - 76.3cm, Depth of Chair - 76.3 cm as measured from pedestal below. Height from ground - min 77.5 to max 89.5cm. Seat height - min 41.0 to max 53.0cm,as per drg. D-17.</p>	Each	64			

S.No.	Description	Unit	Qty.	Rate (Rs)	Rate (in words)	Amount (Rs)
7.5	Providing and Placing in position Visitors Chait with Armrest. The seat and back shall be made up of 1.2+/-0.1cm thick hot pressed plywood and upholstered with fabric and moulded polyurethane foam with PVC lipping all around. The moulded polyurethane foam shall be of density 45+/-2kg/m ³ , and hardness load 16+/-2kgf as per IS:7888 for 25% compression. The dimensions of seat shall be- 49.0cm(W) x 44.0cm(D) and of back shall be 49.0cm(W) x 47.0cm(H).The one-Piece armrests should made of black integral skin polyurethane with 50-70 shore 'A' Hardness and reinforced with M.S insert. The armrests shall bescratch and weather resistant. The armrests shall be fitted to the seat with seat/armrest connecting strip assembly made of 0.5+/-0.05cm thick HR steel. The Tubular frame shall be cantilever type and made of dia 2.54+/-0.03cm x 0.2+/-0.016cm thick MSERW tube and shall be black powder coated. Overall dimensions of Chair shall be, Width of Chair - 55.0cm, Depth of Chair - 61.0 cm as measured from pedestal below. Height from ground - 80.5cm. Seat height - 44.0cm, as per drg no. D-17.	Each	56			
7.6	Providing and Placing in position Visitors Chair without Armrest. The seat and back shall be made up of 1.2+/-0.1cm thick hot pressed plywood and upholstered with fabric and moulded polyurethane foam with PVC lipping all around. The moulded polyurethane foam shall be of density 45+/-2kg/m ³ , and hardness load 16+/-2kgf as per IS:7888 for 25% compression. The dimensions of seat shall be- 49.0cm(W) x 44.0cm(D) and of back shall be 49.0cm(W) x 47.0cm(H). The Tubular frame shall be cantilever type and made of dia 2.54+/-0.03cm x 0.2+/-0.016cm thick MSERW tube and shall be black powder coated. Overall dimensions of Chair shall be, Width of Chair - 52.5cm, Depth of Chair - 61.0 cm as measured from pedestal below. Height from ground - 80.5cm. Seat height - 44.0cm, as per drg no. D-17	Each	30			
7.7	Providing and Placing in position 1 Seater Sofa. The LH/RH side frame shall be fitted to the two ends of the seat/back mounting frame to form the leg assembly. It shall be made of SS J4 Grade tube dia 4.44 cm. x 1.5mm thk. The seat/back mounting frame assy. shall holds the two side frames together. The mounting frames, 2nos shall be used to connect the side frames. The mounting frame shall be made of MS. E.R.W.tube dia 5.08±0.03cm. x 3.15±0.0252cm thk. black painted. The seat /back shall be mounted on 4.0±0.03cm x 2.0±0.02cm x 0.2±0.016cm thk M.S. rectangular tube which shall be welded on the beam of seat/back mounting frame. The seat/back assembly shall consists of 1.2±0.1cm thk plywood insert with Polyurethane foam having density= 45+/-2 Kg/m ³ and hardness of the P. U. foam= 18 to 22 kg on Hampden m/c for 25% compression of the foam. The complete moulded seat/back assembly shall be covered with a replaceable fabric upholstery cover. The dimensions of seat and back shall be: 54.5 cm. (W)x46.7cm. (D)x 12.5cm. (T). The side frames shall be fitted with front and rear bottom shoes made of injection moulded polypropylene. The sofa shall be upholstered with stain repellant "Velvetine plus" fabric as a standard offering. The velvet fabric should be vacuum cleaned in order to remove dirt & grit from the fabric surface. Upholstery covers made from Velvetine fabric should not be soap washed or dry cleaned. Overall Dimensions of Chair shall be Seat Height - 41.5 cm, Height - 74.5cm, Width & Depth of Chair as measured from pedestal - Width-68.4cm and Depth-77.5 cm, as per drg no. D-18.	Each	2			

S.No.	Description	Unit	Qty.	Rate (Rs)	Rate (in words)	Amount (Rs)
7.8	<p>Providing and Placing in position 2 Seater Sofa (set of two seater shall be conuted as one). The LH/RH side frame shall be fitted to the two ends of the seat/back mounting frame to form the leg assembly. It shall be made of SS J4 Grade tube dia 4.44 cm. x 1.5mm thk. The seat/back mounting frame assy. shall holds the two side frames together. The mounting frames, 2nos shall be used to connect the side frames. The mounting frame shall be made of MS. E.R.W.tube dia 5.08±0.03cm. x 3.15±0.0252cm thk. black painted. The seat /back shall be mounted on 4.0±0.03cm x 2.0±0.02cm x 0.2±0.016cm thk M.S. rectangular tube which shall be welded on the beam of seat/back mounting frame. The seat/back assembly shall consists of 1.2±0.1cm thk plywood insert with Polyurethane foam having density= 45+/-2 Kg/m3 and hardness of the P. U. foam= 18 to 22 kg on Hampden m/c for 25% compression of the foam. The complete moulded seat/back assembly shall be covered with a replaceable fabric upholstery cover. The dimensions of seat and back shall be: 54.5 cm. (W)x46.7cm. (D)x 12.5cm. (T). The side frames shall be fitted with front and rear bottom shoes made of injection moulded polypropylene. The sofa shall be upholstered with stain repellent "Velvetine plus" fabric as a standard offering. The velvet fabric should be vacuum cleaned in order to remove dirt & grit from the fabric surface. Upholstery covers made from Velvetine fabric should not be soap washed or dry cleaned. Overall Dimensions shall be Seat Height - 41.5 cm, Height - 74.5cm, Width & Depth as measured from pedestal - Width-125.7cm and Depth-77.5 cm, as per drg no. D-18.</p>	Each	1			
7.9	<p>Providing and Placing in position 3 Seater Sofa (set of three seater shall be conuted as one). The LH/RH side frame shall be fitted to the two ends of the seat/back mounting frame to form the leg assembly. It shall be made of SS J4 Grade tube dia 4.44 cm. x 1.5mm thk. The seat/back mounting frame assy. shall holds the two side frames together. The mounting frames, 2nos shall be used to connect the side frames. The mounting frame shall be made of MS. E.R.W.tube dia 5.08±0.03cm. x 3.15±0.0252cm thk. black painted. The seat /back shall be mounted on 4.0±0.03cm x 2.0±0.02cm x 0.2±0.016cm thk M.S. rectangular tube which shall be welded on the beam of seat/back mounting frame. The seat/back assembly shall consists of 1.2±0.1cm thk plywood insert with Polyurethane foam having density= 45+/-2 Kg/m3 and hardness of the P. U. foam= 18 to 22 kg on Hampden m/c for 25% compression of the foam. The complete moulded seat/back assembly shall be covered with a replaceable fabric upholstery cover. The dimensions of seat and back shall be: 54.5 cm. (W)x46.7cm. (D)x 12.5cm. (T). The side frames shall be fitted with front and rear bottom shoes made of injection moulded polypropylene. The sofa shall be upholstered with stain repellent "Velvetine plus" fabric as a standard offering. The velvet fabric should be vacuum cleaned in order to remove dirt & grit from the fabric surface. Upholstery covers made from Velvetine fabric should not be soap washed or dry cleaned. Overall Dimensions shall be Seat Height - 41.5 cm, Height - 74.5cm, Width & Depth as measured from pedestal - Width-183.0cm and Depth-77.5 cm, as per drg no. D-18</p>	Each	1			

S.No.	Description	Unit	Qty.	Rate (Rs)	Rate (in words)	Amount (Rs)
7.10	Providing and Placing in position Training Chair. The seat and back shall be made from 1.0 ±0.1cm thk. water resistant, flat plywood and upholstered with P.U. foam and fabric. Dimensions of back shall be 42.0cm. (W) X 26.5cm. (H) and of seat shall be 42.0cm. (W) X 42.0cm. (D). The HR Polyurethane foam shall be moulded with density= 45 +/-2 kg/m ³ and Hardness load 16 ± 2 kgf as per IS:7888 for 25% compression. The tubular frame shall be made of dia 2.54 ±0.03cm. x 0.2 ±0.016cm. M.S. E.R.W. tube and a welded leg tube forming the armrest tube made of dia 2.54 ±0.03cm. x 0.2 ±0.016cm. M.S. E.R.W. tube to form the complete assembly, which shall be powder coated (DFT 40-60 microns). The desklet shall be fitted on the right hand side armrest-cum leg tube. The wooden desklet shall be made of 1.8 ±0.05cm. thk. pre-laminated particleboard with 0.15 ±0.03cm. thk. P.V.C lipping all around. Size of desklet shall be 54.0±0.1cm. (W) X 29.0±0.1cm. (D). The one-piece armrests shall be made of black integral skin polyurethane foam with 50-70 Shore hardness and reinforced with M.S. insert. The armrests shall be scratch and weather resistant. The paper tray shall be made of dia 0.4 +0/-0.005cm. M.S. wire spot welded to form a mesh. It shall be black powder coated (DFT 40-60 microns). Size of paper tray shall be 35.0±1.0cm. (W) X 36.0±1.0cm. (D). X 12.5±1.0cm,(H). Overall Dimensions of Chair shall be Seat Height - 45.5 cm, Height - 78.5cm, Width & Depth of Chair as measured from pedestal - Width-54.0cm and Depth-71.5 cm, as per drg no. D-19.	Each	48			
7.11	Providing and supplying fully upholstered sofa, out of Mirande wood frame with SS legs and PU foam seat and back with spring. As per approved shape and leatherite upholstery of approved shade and fionish.					
ii	3seater (set of three seater shall be conuted as one)	Nos.	2			
ii	1 seater	Nos.	6			
	TOTAL OF CHAIRS AND SOFAS carried over to Summary of Furniture					

SUMMARY of FURNISHING WORK		
S.NO.	DESCRIPTION	AMOUNT (in fig. & words)
I	FALSE CEILING	
II	PARTITIONS AND WALL PANELLING	
III	DOORS / WINDOWS	
IV	WINDOW DRAPERY	
V	STORAGES	
VI	MODULAR PARTITIONS/WORKSTATIONS / TABLES	
VII	CHAIRS AND SOFAS	
TOTAL OF FURNISHING CARRIED OVER TO GRAND SUMMARY		

C -ELECTRICAL WORKS

S.No	Description	Unit	Qty.	Rate (Rs)	Rate (Words)	Amount (Rs)
------	-------------	------	------	-------------	----------------	---------------

SECTION - `1`

LT PANELS & DISTRIBUTION BOARDS

1 MAIN LT PANEL BOARD

Set. 1

Supply,installation,testing & commissioning of cubicle type compartmentalized floor mounted free standing type with separation system as per IS:8623 part 1 for 415V, 50HZ, 3 phase 4 wire supply, moisture, dust and vermin proof Main L.T. Panel board, made out from 2mm thick CRCA sheet steel duly powder coated (by seven tank process) in approved colour,complete with Microprocessor based protection release, 3Ph, 4 wire Energy Analyzer with RS 485 port & with MDI, THD, PF etc. , selector switches, multiple LED indication lights, C.T's, Terminals, hardware, cable alley, bus chambers, barriers, base channel made from ISMC 75, interconnections / control wiring with FRLS copper conductor wires & HRC fuses with base & carrier, bus bars, removable gland plates on top & bottom, M.V. danger notice plate , louvers , ventilation fans and following incomer and outgoing feeders & complete as per drawings and specifications :

Incomer:

160A, 4 pole, 36kA, MCCB

The MCCB shall be with built-in microprocessor based protection releases IDMT, earth fault, with 1 no. CT operated Energy analyzer, 3Nos.160 / 5A 15VA class-1 CTs., control fuses, 3 Nos.Phase indicating lights with control fuses - 1 Set.

1 Nos.6 Stage efficient APFC Relay with 1no. 63A / 5A CT & all item required to complete control circuit including but not limited

S.No	Description	Unit	Qty.	Rate (Rs)	Rate (Words)	Amount (Rs)
a	24 Module (8module per row and provision for 4pole I/C) & with I/C-40A, 4P MCB 1 No. + 6-32A SP MCBs-18Nos. + 40A, 30mA, DP RCCB-3Nos.	Each	4			
b	24 Module(8module per row and provision for 4pole I/C) & with I/C-63A,4P MCB) 1 No. + 6-32A SP MCBs-24Nos. + 40A, 30mA, DP RCCB-3Nos.	Each	2			
5	Supplying installation testing & commissioning of Four Pole MCB box complete with 6 A - 32 A,10KA C-curve,Four Pole MCB with connections, cable end box to receive I/C cable ,earthing etc.as required:	Each	6			
6	Supplying installation testing & commissioning of Four Pole MCB box complete with 40A / 63 A,10KA C-curve,Four Pole MCB with connections, cable end box to receive I/C cable ,earthing etc.as required:	Each	6			
7	Supplying, installation, testing & commissioning of Four Pole MCB box complete with 6 A - 32 A,10KA C-curve two pole MCB, connections, blanking plates earthing etc.as required:	Each	1			

SUB-TOTAL OF SECTION-1

NOTES:

- 1)Main L.T.Panel shall be suitable to receive all incoming & outgoing from Top
- 2)All MCCB's shall be with extended type Door operating mechanism with door interlock, phase barriers & copper spreaders.
- 3)All MCCBs shall be with variable over load and short circuit releases,1No. ON lamp with control fuse.
- 4) $I_{cs}=100\%I_{cu}$, for all MCCBs
- 5)All CT's shall be cast resin type.
- 6)All outgoing feeders shall have 1No. ON lamp with HRC control fuse and base.

S.No	Description	Unit	Qty.	Rate (Rs)	Rate (Words)	Amount (Rs)
------	-------------	------	------	-------------	----------------	---------------

- 7) All MCBs to be C-Curve, 10KA & D-Curve for capacitor use.
8) All wires / cable shall be FRLS insulated, stranded copper conductor.
9) All floor mounted type panels shall have ISMC channel of suitable size.
10) All Energy Analyzer shall be with communication port
11) Suitable Exhaust fans shall be provided for Capacitors sections

SECTION - `2'

POWER CABLES AND SUB MAIN.

- 2 Supply , Installation , testing and commissioning of 1100 V grade aluminium conductor extruded XLPE insulated PVC inner sheath, GI wire/tape armoured (as specified below) & outer PVC sheathed cable of following sizes & as per specifications, in trenches, on cable racks or trays or in pipes, including supply of GI clamps & screws and providing aluminum cable tags at every 20 meters & at both termination points , including unloading and transportation of cables at site , unpacking , complete with labour and material :

a	3.5C X 120 sq.mm. A2XFY	Mtrs.	100			
b	4Nos X 16 sq.mm. Cu.FRLS+ 2Nos x10sqmm Cu. FRLS as earth wire in MS conduit.(cost of MS conduit is included)	Mtrs.	100			
c	4Nos X 10 sq.mm. Cu.FRLS+ 2Nos x6sqmm Cu. FRLS as earth wire in MS conduit.(cost of MS conduit is included)	Mtrs.	120			

Note

- 1) All cables shall be as per IS:1554 Part-1 / IS:7098 Part-1
2) The cable lengths furnished here are tentative.
The Contractor shall submit a cable schedule with actual length of cable after award of job. Cable procurement shall be taken up after the schedule is approved.
3) Payment shall be as per actual measurement of laid cables at

S.No	Description	Unit	Qty.	Rate (Rs)	Rate (Words)	Amount (Rs)
------	-------------	------	------	-------------	----------------	---------------

site as certified by site engineer.

- 2 Supply and installation of cable end termination for 1100 V grade Armoured cables using brass double compression cable glands and aluminium thimbles with manual / hydraulic crimping method , earthing of cable armour connection to equipment using cadmium plated bolts, nuts & spring washers , restoration of complete cable insulation (Aluminium thimbles for aluminium conductor cables & copper thimbles for copper conductor cables will be used.), consumables etc., as per specifications

a 3.5C X 120 sq.mm. A2XFY Nos. 2

5 **RACEWAY**

Supplying & fixing of following sizes of G.I.under floor raceways with 1.6mm thick cover in recessed including cutting the wall / floor and making good the same in case of recessed system (For Electrical / Telephone / Datacommunication systems) as required

a 300 mm x 38 mm x 1.6mm thick (3 Partitions) Metre 150

6 Supplying & fixing of following sizes of GI Junction Boxes 60 mm deep,for above trunking made of 1.6mm galvanized sheet and 1.6 mm cover made from GI steel sheet, with cover on all four sides. Each 50

7 Supplying & fixing of following sizes of GI Crossover Boxes 75 mm deep,for above trunking made of 1.6 mm galvanized sheet and 1.6 mm cover made from GI steel sheet, with cover on all four sides. Each 10

8 Supply, Fabrication and installation of supports in structural steel. The supports shall be constructed preferably out of M.S. hollow sections / ISMC / other structural steel & all support structure KG 50

S.No	Description	Unit	Qty.	Rate (Rs)	Rate (Words)	Amount (Rs)
------	-------------	------	------	-------------	----------------	---------------

shall be bolted / welded construction. The cost of plated hardware is also included in the item. The supports & hardware shall be painted with one coat of matching primer and two coats of final enamel paint the shade of paint shall be matching with building steel structure.

SUB TOTAL OF SECTION `2'

SECTION - `3'

SAFETY EQUIPMENT

1	Supply and fixing in position of approved "Shock treatment charts" written in "English' and "Local Language". These charts shall be laminated type.	Sets	1			
2	Supplying and fixing of 415 V Danger Board made out from 1.6 mm thick sheet steel of size 200 mm X 150 mm duly painted with glossy enamel paint on both the sides in required coloured shades	Nos.	2			
3	Supply and fixing of first aid box complete with necessary accessories as per IS-2217 and as approved by Indian Red Cross Society.	Sets	1			
4	Supply and fixing of Canopy type MS structure for & with 6 nos. 9 Ltrs.capacity fire buckets of approved quality, painted white from inside and red from out side and having inscription " FIRE" in white confirming IS 2546-1974 duly amended up to date with sand as required	Job	1			
5	Supply and fixing of 9 ltr chemical foam type fire extinguisher	Nos.	2			

S.No	Description	Unit	Qty.	Rate (Rs)	Rate (Words)	Amount (Rs)
6	Supply and fixing of 5 kg Powder type fire extinguisher	Nos.	2			
7	Supply and fixing of 4.5 kg CO2 type fire extinguisher	Nos.	2			
8	Supply and fixing in position with resin bound required adhesive, 1000 mm wide 2.0 mm. thick 1100 V grade insulating floor matting tested for die-electric strength & quality as per BIS-15652:2006 of approved make and ISI marked.	Mtrs	3			
SUB TOTAL OF SECTION `3'						

SECTION - `4'

EARTHING

1	Supply, installation & testing of earthing station with 600 X 600X 3.15 mm thick copper plate electrode. 2 Nos.32X 6mm copper strip connecting the inspection chamber to copper plate electrode, 50 mm.dia `B' class GI pipe. G.I. funnel with GI wire mesh , cement concrete chamber with concrete base, CI. manhole cover dia 560 mm heavy duty with frame & packing of a mixture of charcoal and salt around plate electrode and excavation & backfilling of all kinds of earth, masonry work, connec- ting the earth pit with earthing grid with bitumen covering of joints , all work as per IS:3043 , typical drawing and Technical Specifications (Chamber size 600 X 600 X 400 mm deep)	Nos	2			
2	Supply, installation & testing of earthing station with 600 X 600X 6.3 mm thick G.I plate electrode. 2 Nos.50 X 6mm GI strip connecting the inspec- tion chamber to G.I., plate electrode, 50 mm. dia `B' class GI pipe. G.I. funnel with GI wire mesh,cement	Nos	2			

S.No	Description	Unit	Qty.	Rate (Rs)	Rate (Words)	Amount (Rs)
------	-------------	------	------	-------------	----------------	---------------

concrete chamber with concrete base Cl. manhole cover dia 560 mm heavy duty with frame and packing of a mixture of charcoal and salt around plate electrode and excavation and backfilling of all kinds of earth , masonry work , connecting the earth pit with earthing grid with bitumen covering of joints , all work as per IS:3043, typical drawing and Technical Specifications (Chamber size 600 X 600 x 400 mm deep)

- 3 Supplying and fixing in position the following bare earthing conductors at a depth of 600mm below ground level/on surface/on structure/in pipe including providing all fixing accessories, GI fixing hardware & effecting proper connections with anticorrosive painting of joints, as per specific- ation, excavation and backfilling of earth.

a	Copper flat 25 mm X 6 mm.	Mtrs.	50			
b	GI flat 50 mm X 6 mm.	Mtrs.	50			
c	8SWG Copper wire	Mtrs.	10			
d	GI flat 25 mm X 3 mm.	Mtrs.	50			

TOTAL OF SECTION `4'

SECTION `5'

LIGHT POINT WIRING

Point Wiring of the following light / power outlets with ISI marked 1.6 mm thick MS conduit pipes either on surface or concealed, complete with all accessories like brackets, clamps saddles, pull through / junction boxes, bends, fan boxes, grid plate, screw less modular cover plate and ISI modular switch, socket & accessories, FRLS insulated single core copper (phase, neutral & earth) cable

S.No	Description	Unit	Qty.	Rate (Rs)	Rate (Words)	Amount (Rs)
	of specified sizes including earthing of switch boxes / fittings, providing all accessories and interconnections as required to complete the installation as per drawings & technical specifications. All cables / wires shall be stranded, 1100 Volt grade and ISI .					
1	MCB controlled Light Circuit Point with 3 nos 2.5 sq.mm FRLS insulated copper cables from Lighting Distribution Board (LDB) to the first and subsequent switch boxes or to the first light point from LDB & complete in all respects as specified above (cost of switch box , switches and MCB excluded)	Nos.	50			
2	2way light point wiring with 5nos 1.5 sqmm FRLS insulated copper cable from switch to the first light fitting, including the supply and fixing of GI switch boxes , grid plate, screw less modular cover plate and modular type 2 - way switches at both ends and complete in all respects as specified above (cost of switch box & switches included). One light point controlled by two nos two way switch	nos	4			
3	Light point wiring using 3 nos 1.5 sq mm FRLS insulated copper cable from the switch box to the first light point , including the supply & fixing of GI switch boxes, grid plate,screwless modular cover plate with modular type 6A switch as required and complete in all respects as specified above (cost of switch boxes and switches included).	Nos.	65			
4	Looped Light Point wiring with 3nos 1.5 sq mm FRLS insulated copper wires looping from one light point , to another termination at light fitting and complete in all respects as specified (cost of light fitting excluded)	Nos.	65			
5	Exhaust / Wall fan point with 3 nos 1.5 sq mm FRLS insulated	Nos.	5			

S.No	Description	Unit	Qty.	Rate (Rs)	Rate (Words)	Amount (Rs)
	copper cable including termination , supply , fixing, testing and commissioning of controlling switch modular type fixed on switch board along with other switches and supply , fixing , testing and commissioning of 1 No. 3 pin 6 A socket,GI switch box, grid plate and 6 A plug top but without the switch near the exhaust fan					
6	6 A Five pin light plug point using with 3 nos 2.5 sq mm FRLS insulated copper wires including termination & providing of 6A modular type switch socket , grid plate and screw less cover plate along with GI box and complete in all respects as specified above	Nos.	60			
7	6 A Five pin light plug point using with 3 nos 2.5 sq mm FRLS insulated copper wires including termination and complete in all respects as specified above(Switch &socket shall be paid separately)	Nos.	105			
8	6 A Five pin light plug point using with 3 nos 2.5 sq mm FRLS insulated copper wires including termination & providing of 3nos 6A modular type sockets&1no X16A Switch , grid plate and screw less cover plate along with GI box and complete in all respects as specified above	Nos.	105			
9	Wiring for primary power plug / industrial socket / light point with 3 X 4 sq mm. FRLS insulated copper conductor, single core cable including connectors in surface/ recessed steel conduit as required and as per above specifications each point upto 15 Mtr length)	Nos.	24			
10	Wiring for secondary power plug / industrial socket / point looped from p sq mm. FRLS insulated ,copper conductor, single core cable in surface /recessed steel conduit as required and as per above specifications each point upto 15 Mtr length)	Nos.	20			
11	Supplying & fixing of 6 pin 15/16 amps modular socket outlet with GI box ,grid plate & screw less modular plate ,15 / 16 amps	Nos.	44			

S.No	Description	Unit	Qty.	Rate (Rs)	Rate (Words)	Amount (Rs)
	modular switch, including connections etc. as required & as specified above					
12	Supplying & fixing of 5 pin 6 amps, -3Nos. modular sockets outlet point using 3 Nos. 2.5 sqmm FRLS insulated copper wires with GI box ,grid plate & screw less modular plate , 1 No.16 amps modular switch, 1 No. Blanking Plate, including connections etc. as required & as specified above	Nos	85			

TOTAL OF SECTION `5`

SECTION '6'

CONDUIT & SERVICES

Fire Detection & Alarm System

- | | | | | | |
|----|--|----|--|-----|--|
| 1 | Supplying , fixing and laying of heavy duty MS conduit in false ceiling, floor , wall panelling or partitions etc. includes all chase cutting and making the surface good along with the 18 SWG GI pull wire complete with all the accessories & as specified above, of the following sizes. | | | | |
| a) | 20 mm | RM | | 375 | |
| b) | 25 mm | RM | | 100 | |
| 2 | Supplying , fixing and laying of heavy duty PVC conduit in floor, wall panelling or partitions etc. includes all chase cutting and making the surface good along with the 18 SWG GI pull wire complete with all the accessories & as specified above, of the following sizes. | | | | |
| a) | 20 mm | RM | | 50 | |
| b) | 25 mm | RM | | 50 | |

S.No	Description	Unit	Qty.	Rate (Rs)	Rate (Words)	Amount (Rs)
3	Providing , installation , testing & commissioning of 4 Zone Main Fire Alarm Panel with battery backup with following features apart from other standard features: Zone isolation , Zone indication , Fault & Fire indications, lamp test, push button for Alarm accept and Reset, Indication for battery charging with ammeter & Voltmeter, Mic, Mimic Panel, amplifier, End of Line resistance for each zone etc.	Each	1			
4	Providing, installation, testing & commissioning of Ionization / optical type with blinking LED Smoke Detectors with imported base.(Below and above false ceiling)	Each	60			
5	Providing , installation, testing and commissioning of Rate of rise cum fixed bimetallic type Heat Detectors with base .	Each	1			
6	Providing, installation, testing & commissioning of Response Indicators	Each	46			
7	Providing, installation, testing & commissioning of Electronic Hooters	Each	3			
8	Providing , installation , testing & commissioning of Glass Break Type Manual Call Point.	Each	3			
9	Providing , installation , testing and commissioning of Exit Sign Boards (EXIT AND ARROW) with 5W LED & battery backup	Each	4			
10	Supplying & laying of 2 x 1.5sqmm. FRLS insulated, copper, conductor wire in existing conduits in recess / surface including termination as req .	Meter	500			
11	Supplying & laying of 3 x 1.5sqmm. FRLS insulated, copper,	Meter	50			

S.No	Description	Unit	Qty.	Rate (Rs)	Rate (Words)	Amount (Rs)
	conductor wire in existing conduits in recess / surface including termination as req .					
13	Removal of existing sprinklers installed and reversing them to get fixed into the false ceiling using flexible sprinkler pipe. Complete with new sprinkler and hangers to suspend the pipes. Cost to be calculated on per sprinkler/ point basis.	Nos	100			
PA System						
14	Supply and laying of following sizes of flexible copper conductor, PVC insulated shielded 2C X 2.5 sqmm tinned copper wires in 20 mm dia existing MS Conduits for speakers	Meter	500			
15	Supplying , installation , testing and commissioning of 6W Ceiling mounted speakers with LMT speakers:	Each	30			
16	Supplying , installation , testing and commissioning of 400W Power Amplifier	Each	2			
17	Supply Installation,testing & commissining of Goose Neck Microphone with press to talk	Each	1			
18	Supplying , installation , testing and commissioning of 19" rack 42U suitable for accomodating the above PA & below mentioned CCTV equipment	Each	1			
19	Supplying , installation , testing and commissioning of Audio Player for playing FM, Casset, CD and MP-3 CD of Bosch make as per Cat No. BGM or approved equivalent.	Each	1			
CCTV						
	Supplying, installation, testing & commissioning of the following, with all mounting accessories / arrangements as required.					

S.No	Description	Unit	Qty.	Rate (Rs)	Rate (Words)	Amount (Rs)
19.1	Supplying, Installation, Testing & Commissioning of 8 input real time display and real time recording (25 fps PAL) Digital Video Recorder, H.264 video compression. The unit shall be capable to handle input / output alarms and relays. The unit shall be able to communicate over TCPIP (internet) and shall be able to show real time / recorded images over the internet / LAN / WAN. The unit shall be simultaneously record, show live footage, backup on USB drive and transmit over network The prices should include 3 TB HDD per DVR and should be complete in all respects as per specifications including ower supply units etc.	Set	4			
19.2	Supply, installation, testing and commissioning of High Resolution 22 inch LCD colour TV monitor with on screen adjustment menu, durable metal cabinet etc. complete in all respects as per specifications.	Nos.	4			
19.3	Supply, installation, testing and commissioning of Colour indoor dome 1/3" CCD True Day/Night Vandal proof Dome Camera, 540 TVL, 3.3 - 12 mm VF Auto Iris,12 VDC/24 VAC internal dust proof housing & bracket mounting arrangements etc. for indoor application, complete in all respects as per specifications including ower supply units etc.	Nos.	30			
19.4	Supplying and drawing co- axial TV cable RG-6 grade, 0.7 mm solid copper conductor PE insulated, shielded with fine tinned copper braid and protected with PVC sheath in the existing surface/ recessed steel/ steel conduit as required.	Meter	500			
20	Supplying, laying, terminations, testing & commissioning of 2 pair X 0.61 mm PVC insulated, PVC sheathed and taped tinned copper telephone unarmoured cable in existing conduits/Raceway	Meter	1500			

S.No	Description	Unit	Qty.	Rate (Rs)	Rate (Words)	Amount (Rs)
21	Supplying, laying, terminations, testing & commissioning of Co-axil (RG-6)cable solid annealed bare electronic grade copper conductor co-axil cable with gas injected physical foam PE dielectric poly-laminated aluminium wire braading ,jelly filled & overall PVC sheathed in black colour including 20mm dia MS conduit on surface and complete with fixing accessories	Meter	800			
22	Supplying, laying, terminations, testing & commissioning of 4 pair UTP Cat - 6 PVC insulated, PVC sheathed tinned copper conductor cable in existing conduits/Raceway as required	Meter	2000			
23	Supplying and fixing modular type RJ -11 telephone sockets housed in GI boxes recessed in walls / partitions / panelling for telephone, outlets, including modular grid plate and screw less cover plate complete in all respects and as specified	Each	77			
24	Supplying and fixing modular type RJ - 45 UTP sockets housed in GI boxes recessed in walls / partitions / panelling for Data outlets, including modular grid plate and screw less cover plate complete in all respects and as specified	Each	104			
25	Supplying and fixing in position of 200 Pair powder coated MS housing for telephone tag block with hinged & lockable door including supply & fixing of tag block made out from self extinuating polystrene material, corrosion resistant, highly resistant to shock, sturdy and maintenance free KRONE type telephone tag block complete as required	Each	1			

SUB TOTAL OF SECTION `6`

SECTION '7'

LIGHTING FIXTURES AND FANS :

1. The rates for fixing of lighting fixtures and fans shall include all fixing accessories that may be required to make the installation

S.No	Description	Unit	Qty.	Rate (Rs)	Rate (Words)	Amount (Rs)
------	-------------	------	------	-------------	----------------	---------------

complete in all respects such as:

- a. Providing suitable length of down rod, hanger, metallic flexible pipe with couplers at both ends and connecting wires wherever required.
- b. Internal wiring between accessories.
- c. Connector blocks for connecting the wires from fixtures to the points.
- d. Earthing of fixtures and fans.
- e. Approved enamel painting of down rods, clamps and other components and fixing accessories
- f. The Electronic ballast shall be constant voltage heavy duty type & suitable to work on DG, invertor & on Normal supply (GRID) hum free, THD shall be less than 10%

2. All FTL lamps(T-8) to be Lumilux plus or Trulite lamps & All T-5 Lamps to be High Efficiency lamps.

3. Minimum Lumen Out put of Lamps shall be as follows:

LED Lamp 100lumens per watt.

4. Lamp Life of LED Lamps to be minimum 50000 Hrs respectively and colour tem.shall be6500.

4. Lamp Life of T-5 Lamps to be minimum 15000 Hrs & 24000 Hrs respectively.

1	Supply, installation, testing & commissioning of LED Downlight with white reflector. Tool-free ceiling installation via rapid-mounting springs. Cut-out opening , Recessed type fitting complete in all respect. Philips make cat.no. DN392BLED10S with 10W LED lamps	Each	65			
2	Supply, installation, testing & commissioning of LED Downlight with white reflector. Tool-free ceiling installation via rapid-mounting springs. Cut-out opening , Recessed type fitting complete in all respect.	Each	6			

S.No	Description	Unit	Qty.	Rate (Rs)	Rate (Words)	Amount (Rs)
	Philips make cat.no. DN394BLED16S with 16W LED lamps					
3	Supply, installation, testing & commissioning of LED Downlight with white reflector. Tool-free ceiling installation via rapid-mounting springs. Cut-out opening , Recessed type fitting complete in all respect. Philips make cat.no. RC365B LED33-6500PSUOD WHwith 33W LED lamps	Each	45			
4	Supply, installation, testing & commissioning of LED type surface mounted fitting with 2 X22W LED lamp Philips make cat no-TMC501P x T-LED 22W P3242	Each	5			
5	Supplying, installation, testing & commissioning of Heavy Duty Exhaust Fans 1400 RPM complete with louvers / shutter etc. 12" dia etc.as req.	Nos	3			
SUB TOTAL OF SECTION `7'						

SUMMARY OF ELECTRICAL WORKS

S.No.	DESCRIPTION	AMOUNT (Rs)
1	LT PANELS & DISTRIBUTION BOARDS	
2	POWER CABLES AND SUB MAIN.	
3	SAFETY EQUIPMENT	
4	EARTHING	
5	LIGHT POINT WIRING	
6	CONDUIT & SERVICES (PA, Data & Telephone Systems)	
7	LIGHTING FIXTURES AND FANS :	
<hr/> TOTAL ELECTRICAL WORKS CARRIED TO GRAND SUMMARY <hr/>		

D - AIRCONDITIONING WORKS						
S. No.	Description	Unit	Qty.	RATE (Rs)	RATE (Words)	AMOUNT (Rs)
a	All items of work under this Contract shall be executed strictly to fulfill the requirements laid down under “Basis of Design” in the specifications. Type of equipment, material specification, methods of installation and testing and type of control shall be in accordance with the specifications, approved shop drawings and the relevant Indian Standards, however capacity of each component and their quantities shall be such as to fulfill the above mentioned requirement.					
b	The unit rate for all equipment or materials shall include cost in RUPEES for equipment and materials including all taxes and duties and also including forwarding, freight, insurance and transport into Contractor’s store at site, storage, installation, testing, balancing, commissioning and other works as required.					
c	The rate for each item of work included in the Bill of Quantities shall unless expressly stated otherwise, shall include cost of:					
	· All materials, fixing materials, accessories, appliances, tools, plants, equipment, transport, labour and incidentals required in preparation for and in the full and entire execution, testing, balancing, commissioning and completion of work as per BOQ, Specifications and Drawings.					
	· Wastage on materials and labour.					
	· Loading, transporting, unloading, handling/double handling, hoisting to all levels, setting, fitting and fixing in position, protecting, disposal of debris and all other labour necessary for the full and entire execution.					
	· Liabilities, obligations and risks arising out of Conditions of Contract.					
	· All requirements of Specifications, whether such requirements are mentioned in the item or not. The Specifications and Drawings where available, are to be read as complimentary to and part of the Bill of Quantities and any work called for in one shall be taken as required for all.					

S. No.	Description	Unit	Qty.	RATE (Rs)	RATE (Words)	AMOUNT (Rs)
	In the event of conflict between Bill of Items and other documents including the Specifications, the most stringent shall apply. The interpretation of the Architect / Owner shall be final and binding.					
d	This Schedule shall be fully priced					
e	No alteration whatsoever is to be made to the text or quantities of this Schedule unless such alteration is authorized in writing by the Architect / Owner. Any such alterations, notes or additions shall unless authorized in writing be disregarded when tender documents are considered.					
f	In the event of an error occurring in the amount of the Schedule as a result of wrong extension of the unit rate and quantity, the unit rate quoted by the bidder shall be regarded as firm and the extensions shall be amended on the basis of rates.					
g	The Contractor shall procure and bring Material/Equipment to the site only on the basis of drawings approved for construction and shop drawings and not on the basis of Bill of Quantities, which are approximate only. This also applies to the Contractor's requisition for Owner supplied materials.					
h	All Control cabling & wiring required to make the system complete shall be treated as part of equipment, panels etc. and nothing extra shall be payable on this account.					
i	Rmt shall mean distance between the indoor and outdoor unit measured along the route of refrigerant piping irrespective of number of refrigerant circuits					
	1 Split Type Air-Conditioners:					
	Supply of Ceiling Concealed ductable Split Air-Conditioning Unit complete in all respect as required (for conference room)					
1.1	2.0 TR Ductable Split Unit .	Nos.	1			

S. No.	Description	Unit	Qty.	RATE (Rs)	RATE (Words)	AMOUNT (Rs)
1.2	Supply of Hi-wall type indoor units each complete with coil, decorative panel, pre-filter etc.Nominal capacities shall be as follows: (for server room)					
	1.0 TR (1W+1standby)	Nos.	1			
2	Refrigerant Piping					
2.1	Supply, Interconnecting refrigerant copper pipe work with (13mm/9mm thick) closed cell elastomeric nitrile rubber tubular insulation (Armaflex) between each set of indoor & outdoor units as per specifications, the piping work inside & outside the room shall be included with chase cutting, filling and making good the same as required as per specifications.					
2.1a	2.0 TR ductable type split unit (pipe dia 6.36,15.8 mm)	RM	20			
2.1b	1.0 TR ductable type split(pipe dia6.36,15.8 mm)	RM	15			
3	Control Cabling					
3.1	Control Cable for ductable (from indoor to outdoor)	RM	20			
3.2	Control Cum Power cable for Hi-wall (from indoor to outdoor)	RM	15			
4	Drain Piping					
	Supply,installation,testing and commissioning of rigid PVC piping complete with fittings, supports as per specifications and duly insulated with 6 mm thick closed cell nitrile rubber insulation .					
4.1	32 mm dia	Rm	40			
4.2	25 mm dia	Rm	150			
5	Outdoor Stand					
5.1	for Hi wall Split Unit	Nos.	1			
5.2	For Ductable Split Unit	Nos.	1			
6	AIR DISTRIBUTION					

S. No.	Description	Unit	Qty.	RATE (Rs)	RATE (Words)	AMOUNT (Rs)
6.1	Supply, fabrication, installation and testing of sheet metal ducts in accordance with the approved shop drawings and as per specifications (duct shall be fabricated off-site with machine):					
a.	24 gauge galvanized sheet steel	Sqm	350			
b.	22 gauge galvanized sheet steel	Sqm	500			
c.	20 gauge galvanized sheet steel	Sqm	250			
7	Supply, installation and testing of 16 G GSS construction opposed blade volume control dampers complete with brass bush & operating handles within ducts to be provided with suitable links, levers and quadrants for manual control of volume of air flow and for proper balancing of the air.	Sqm	3			
8	Supply, installation, testing and balancing of extruded aluminium powder coated door transfer grilles.					
a.	450x100mm	No.	3			
9	Supply, installation, testing and balancing of square, rectangular and round extruded aluminium powder coated diffusers for return / exhaust air required as per the approved shop drawings. Diffuser shall be with spring loaded removable core type distribution grid and shall be without key operated dampers.					
	Extruded Aluminium diffusers powder coated (Grid Type):					
9.01	450X450 (Neck size) overall size 600x600 (Grid type)	Nos.	2			
9.02	300X300 (Neck size) overall size 600x600 (Grid type)	Nos.	2			
9.03	225x225 (Neck size) overall size 300x300 (Grid type)	Nos.	2			

S. No.	Description	Unit	Qty.	RATE (Rs)	RATE (Words)	AMOUNT (Rs)
10	Supply,installation,testing and balancing of plaque type square,extruded aluminium powder coated diffusers for return / supply air required as per the approved shop drawings. The diffuser outer face shall be of aluminium extrusion and central core shall e stamped aluminium sheet. The Plaque face shall be of 22G powder coated steel sheet plaque diffusers are designed for 610X610 or 305X305 ceiling and shall have a continous slot surrounding the plaque.					
	Extruded Aluminium diffusers powder coated (Grid Type):					
10.01	250X250 (Neck size) overall size 600x600 (Grid type)	Nos.	125			
10.01	300X300 (Neck size) overall size 600x600 (Grid type)	Nos.	10			
11	Supply, installation, testing & balancing of curved fixed bar, extruded aluminium powder coated supply/Return air grilles, normal flow, 15 ⁰ one way / two way deflection with all sides flanged.					
11.01	150mm high	M	25			
11.02	100mm high	M	100			
12	Supply , installation and testing of multi slot diffuser duly powdered coated.					
	2 slot	RMT	60			
13	Supply, installation, testing & balancing of key operated Coller dampers.	Sqm	10			
14	Supply, fabrication, installation and testing of the Flexible connections constructed of fire resistant flexible double canvas as per the approved specifications.	Nos.	1			
15	In-Line Fan (Toilet & Pantry Exhaust)					
	Supply, installation , testing and commissioning of In-line type fans complete with motor, blades, fixing frame and louvers as per specifications and drawings					
15.01	100 CFM at 10 mm wg	Nos.	2			
15.02	150 CFM at 10 mm wg	Nos.	1			

S. No.	Description	Unit	Qty.	RATE (Rs)	RATE (Words)	AMOUNT (Rs)
16	INSULATION					
16.01	Supply and installation of acoustic lining within supply air ducts, as per the approved shop drawings / specifications.					
a.	15mm thick open cell nitrile ruer insulation with approved adhesive as per drawing & specification	Sqm	100			
16.02	Supply and installation of External thermal insulation on ducts as per the approved shop drawings/ specifications. Overlapping of insulation at joint & flanges are included in the quoted prices					
a.	9 mm thick nitrile rubber insulation with approved adhesive as per drawing and spec.	Sqm	1150			
	TOTAL HVAC CARRIED OVER TO GRAND SUMMARY					

GRAND SUMMARY OF QUOTATION			
S. NO.	DESCRIPTION		AMOUNT (in fig. & words)
A	Civil Work		
B	Furnishing Work		
C	Electrical works		
D	Air Conditioning Works		
	GRAND TOTAL		
BIDDERS QUOTE IN WORDS			
BIDDERS SIGNATURE			
BIDDERS NAME			
BIDDERS SEAL			

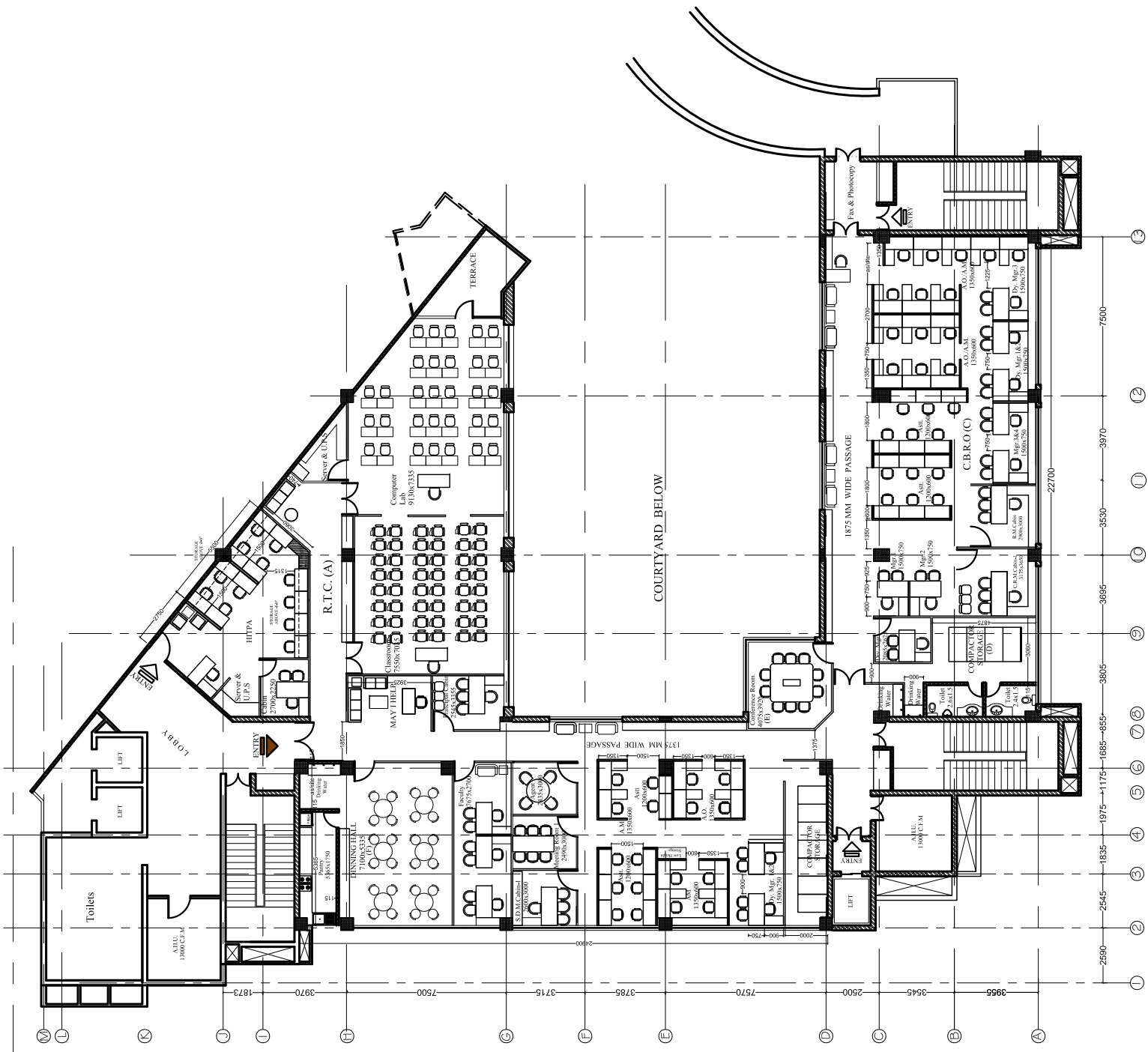
SECTION V1

List of Approved makes - As given below or as per architects approval unless specified in bid document

A	MATERIAL GENERAL	MANUFACTURER/BRAND NAME
1	Anti termite chemical (Chlorpyriphos emulsifiable concentrate)	NOCIL
2	Adhesive	For wood-Fevicole-SH/Movicole HV
3	Fitting Hardware	EBCO(Earl Bihari), Hetich,Ozone/Dorma/Kolf
4	Locks	Godrej, Golden
5	Laminate	1.5 mm thk. Greenlam, Century
6	Paints	1.0mm thk. ,Greenlam,Sunmica,Century Asian, Berger, Dulux , Shalimar (Bison) British Paints, Asian Paints or equivalent.
7	Wood preservations	Century/Duro/Green/Alpro
8	Plywood	Century/Duro/Green/Alpro
9	Flush Doors	Century/Duro/Green/Alpro
10	Glass	Modi float glass
11	Prelaminated Particle Board	Archid, Nova pan, Greenlam,
12	Softboard	Sitatex
13	Cement	L&T, Ambuja,Bangur, Birla,JK
14	Tiles	Kajaria, Nitco, Marbonite
15	Paint (Distemper / Plastic Emulsion	Berger,Asian , Shalimar
16	Vertical Blinds	Mac/Vista levelor/ as approved
17	False Ceiling	Aerolite/Gyproc/Daiken
18	Aluminium Composite Panel	Eurobond, Alomax, Sunbond
19	Acrylic solid surface	Corian, Hanex, LG,
20	Locks,Hardware	Hettich/Kich/Dorset/Doors
21	Vitreous China Sanitaryware	HINDWARE/CERA
22	C.P fittings	JAQUAR/GEM
23	C.P Bottle Trap	KINGSTON/JAQUAR
24	Bath Room C.P accessories	JAQUAR/ESS ESS
25	G.I. and M.S. pipes	JINDAL HISSAR
26	CPVC	AJAY/ASTRA/SUPREME
27	False Ceiling	Aerolite/Gyproc/Daiken
28	Chairs, SS Sofa,	Godrej, Featherlite
29	Modular Furniture	Godrej, Wipro, HNI BP ERGO, Featherlite, Harmony Systems

	MATERIAL	MANUFACTURER/BRAND NAME	
B	ELECTRICAL		
	1	LT Panels	CPRI type test passed vendor
	2	MCCB	L&T,SEIMENS,MERLIN GERIN(FRANCE)
	3	MCB,RCCB & DISTRIBUTION BOARDS	LEGRAND,L&T,MERLIN GERIN.
	4	CONDUIT	BEC ,AKG
	5	COPPER WIRE	SKYTONE,RALLISION,PHINOLEX,RAJNIGANDHA.
	6	POWER CABLES	CCI ,HAVELLS,RALLISION,GEMS CAB.
	7	FITTING	PHILIPS ,CROMPTION
	8	SWITCH & SOCKETS	MK ,ANCHOR ROMA.
	9	CABLE END TERMINATION	COMMETT
	10	THIMBLES	DOWELLS
	11	TELEPHONE TAG BLOCK	KRONE/AMP/AVAYA
	12	XLPE / PVC Insulated Aluminum Conductor	Skytone/Polycab/Glostar/Havells/KEI
	13	Telephone Wires/cables	Skytone / Polycab/KEI / Havells
14	Lights Fittings	Wipro, Philips, Bajaj	
C	FIRE FIGHTING		
	1	Jindal hissar / Surya	Jindal hissar / Surya
	2	Butterfly Valve	SANT/C & R / KSB
	3	Pressure Switches	C & R / Advance
	4	Pressure Gauges	Indfos or approved equal
	5	Branch Pipe	MINIMAX /New age
	6	Fire Extinguisher	MINIMAX / Fire axe/Safe Guard
	7	Flow Switch	SYSTEM SENSOR/ RAPID CONTROL
	8	Ball Valve	SANT / ZOLOTO
9	Sprinkler	Tyco / VKing / H.D.	

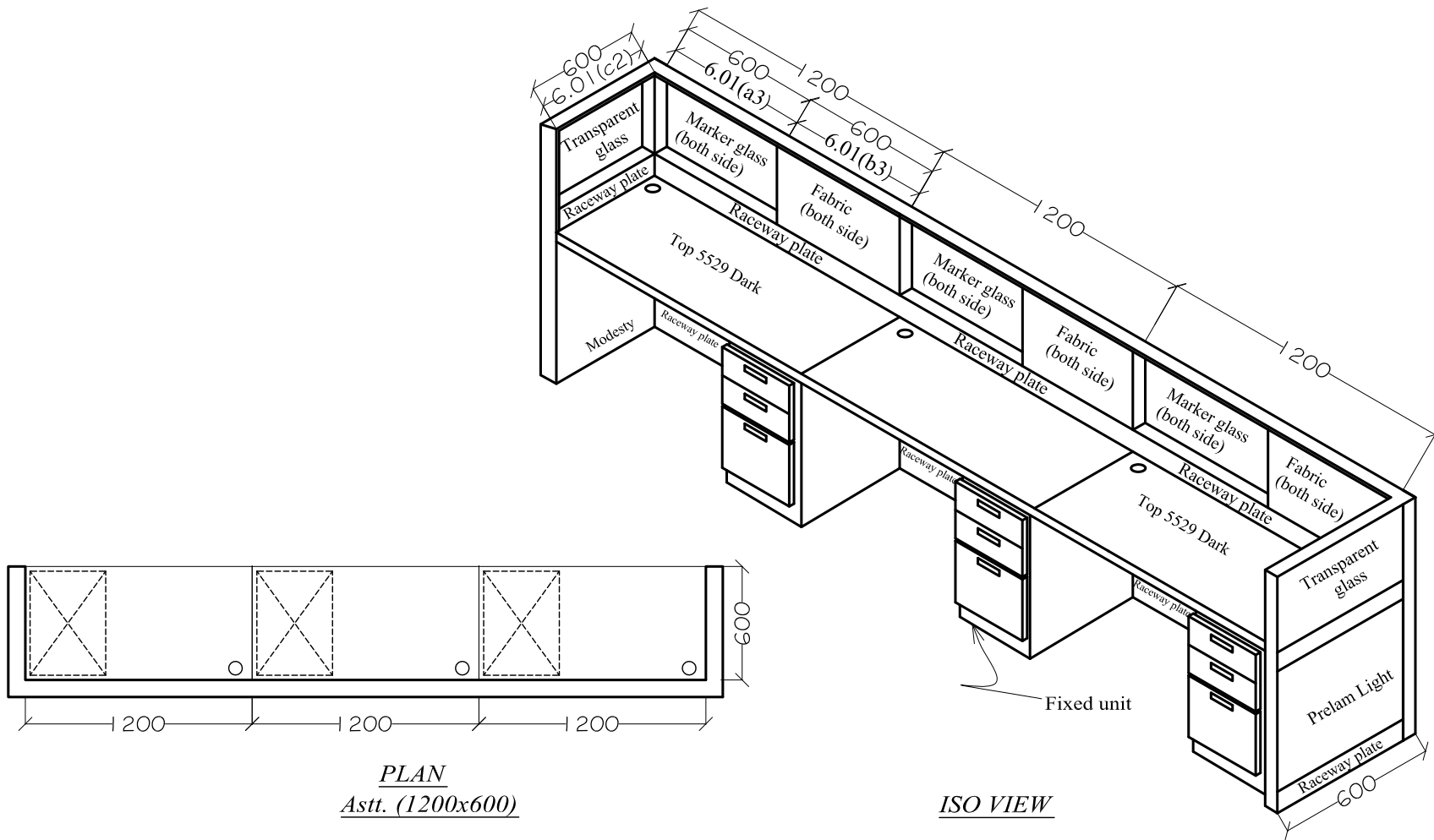
	MATERIAL	MANUFACTURER/BRAND NAME
D	1 AIR CONDITIONING EQUIPMENT/UNIT	
	Ducatble Split Unit	Bluestar/Carrier/Voltas/Hitachi/Toshiba
	2 FANS	
	a Inline Fan	Systemair/ Sphere/Greenheck/Nicotra/Comefri/Ostberg/Kruger
	Propeller Fan	Kruger/Marathan
	3 PIPING	
	a Refrigerant Copper Pipe	Mandev/Totaline/Rajco Metals/Jindal/Mexflow
	b uPVC Drain Pipe	Polypack/Supreme/Prince/ Finolex
	4 INSULATION	
	a Nitrile Rubber	Armaflex K-flex/ Armasound
	b Crossed linked Polyethylene	Torcellene/ Thermobreak/ Armaflex/Paramount/Supreme
	c Glass Wool (Prelaminated/Plain)	Kimmco/ Owens Corning
	5 DUCTING & GRILLS	
	a Rectangular	Zeco/ Ductofab/Rolastar/Technofab
	b Round	Atco/GP Spiro/ Caryaire
	c G.I. Sheet Metal Duct	Jindal/National/Tata/SAIL/ Nippon
	d Grills/ Diffusers	Airflow/Dynacraft/Ravistar/Caryaire/Servax/ Mapro/Novex
	e VCD/Gravity louvers/Exhaust & fresh air louvers	Air Flow/MaproCaryaire/Ravistar/Servax/Novex
	f Fire and Smoke Dampers	Airflow/ Caryaire/ Ravistar/ Dynacraft/ Servex /Novex
g Structure Steel	Rana/ Rati/ or Equivalent ISI marked as approved.	
h Fire Sealant	Hilti / Birla3M	
i Dash Fastners	Hilti / Fishers	



Project:-
Proposed Interiors for Oriental
Insurance Company Ltd at 'NBCC
Centre', Phase-I, Okhla, New Delhi

Dwg. Title:-
Modular Partition
Date:-
21.07.17
Scale:-
D-1

Architects:-
VASTU MANDAL
Architects, Engineers & Interior Designers
P. - 3/8 Lado Sarai, Old M. B. Road N. D. - 30
Ph. - 416654557, Email: vastumandal@gmail.com



PLAN
Astt. (1200x600)

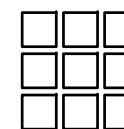
ISO VIEW

PROJECT-
Proposed Interiors for Oriental
Insurance Company Ltd at '**NBCC**
Centre', Phase-1, Ohkla, New Delhi

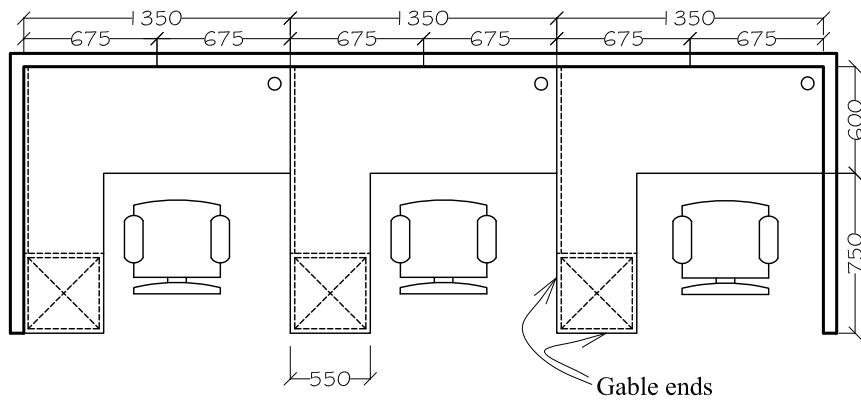
DRG. TITLE-
T1 (Partition)

DATE- 03.08.17 **SCALE-** **DWG NO-** D-04

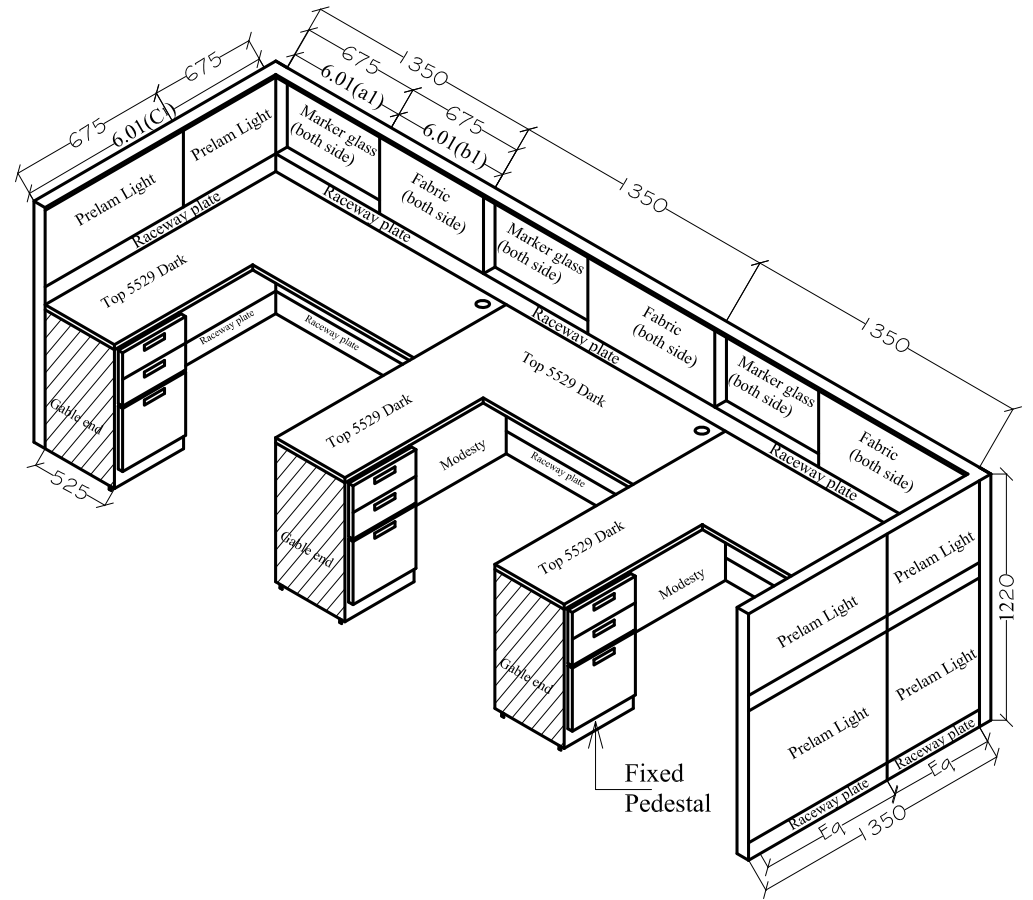
R-No.	Date	Revisions	Issued To



VASTU MANDAL
Architects, Engineers & Interior Designers
F - 3 2 8 Lado Sarai, Old M. B. Road N. D.-30
Ph. 41665455 , E-mail vastumandal@gmail.com



PLAN
A.O./A.M.
1350x600 + 750x525



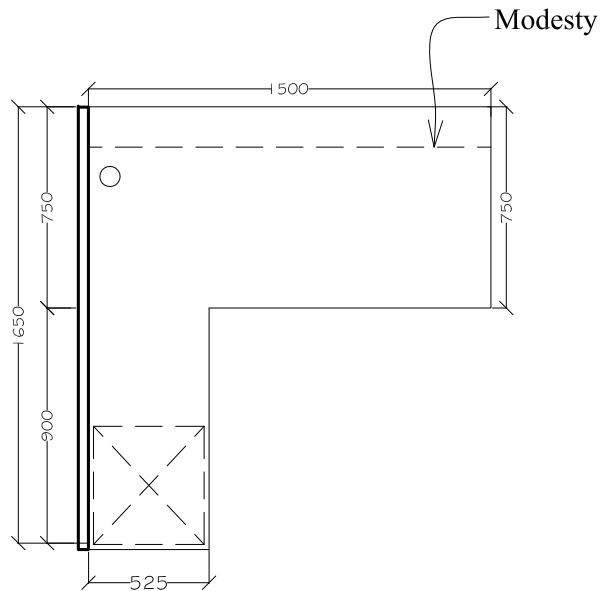
ISO VIEW

PROJECT- Proposed Interiors for Oriental Insurance Company Ltd at 'NBCC Centre', Phase-I, Ohkla, New Delhi

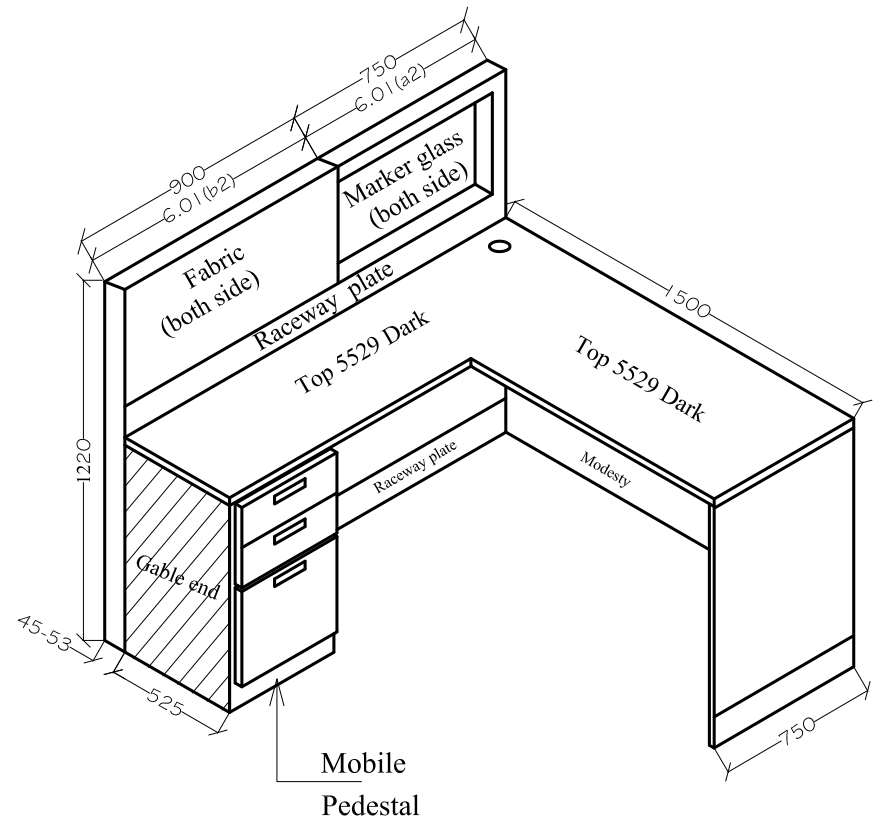
DRG. TITLE- T2 (Partition)
DATE- 20.08.17
SCALE-
DWG NO- D-05

R-No.	Date	Revisions	Issued To

VASTU MANDAL
 Architects, Engineers & Interior Designers
 F - 3 2 8 Lado Sarai, Old M. B. Road N. D.-30
 Ph. 41665455, E-mail vastumandal@gmail.com



PLAN
 MGR/DY.MGR.
 1500x750 (900x525)



ISO VIEW

PROJECT-
 Proposed Interiors for Oriental
 Insurance Company Ltd at '**NBCC
 Centre'**,Phase-1,Ohkla,New Delhi

DRG.TITLE-
T4 (Partition)

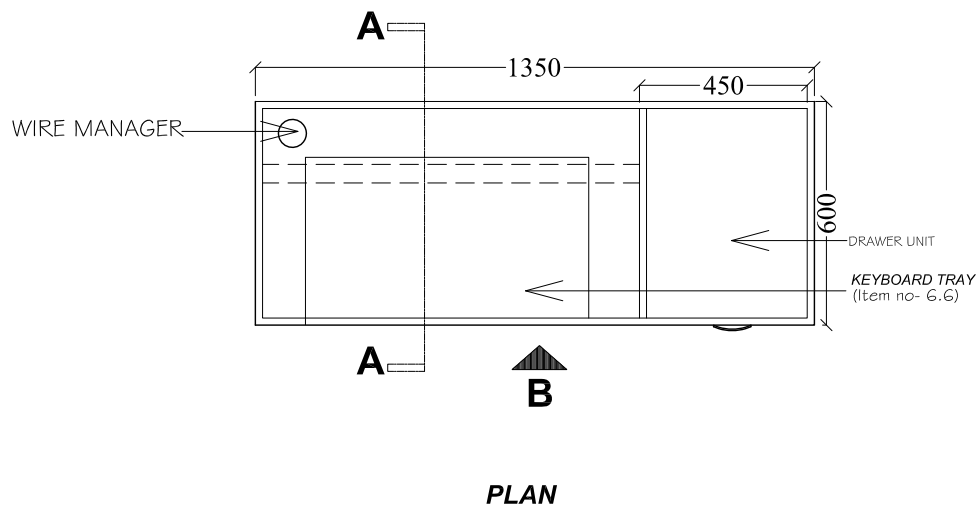
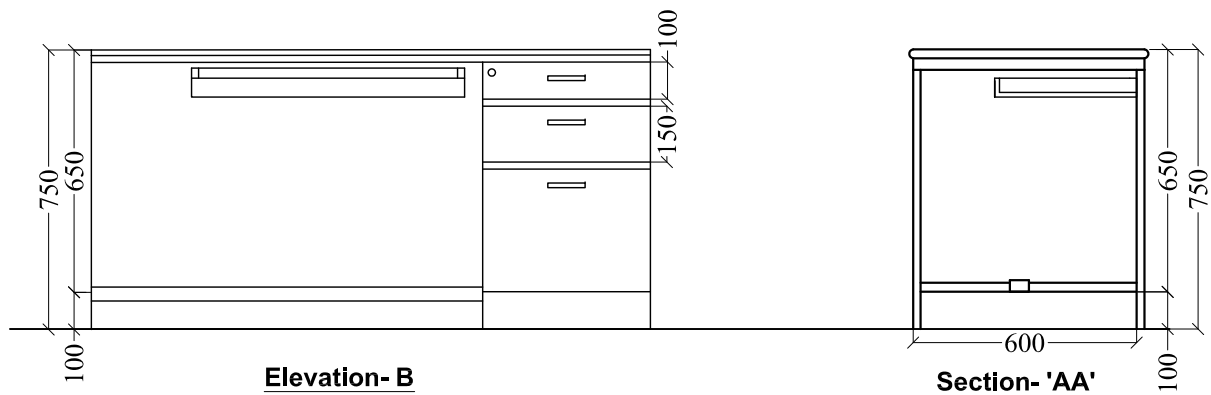
DATE- 03.08.17

SCALE-

DWG NO- *DL06*

R-No.	Date	Revisions	Issued To

VASTU MANDAL
 Architects, Engineers & Interior Designers
 F - 3 2 8 Lado Sarai, Old M. B. Road N. D.-30
 Ph. 41665455 , E-mail vastumandal@gmail.com



PROJECT-
Proposed Interiors for Oriental
Insurance Company Ltd at '**NBCC
Centre'**, Phase-1, Ohkla, New Delhi

DRG. TITLE-

T3 (Teacher Table)

DATE-

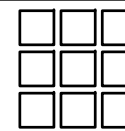
03.08.17

SCALE-

DWG NO-

Page 72 of 81

R-No.	Date	Revisions	Issued To

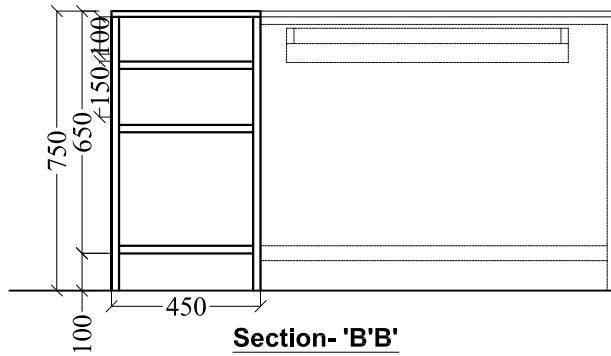


VASTU MANDAL

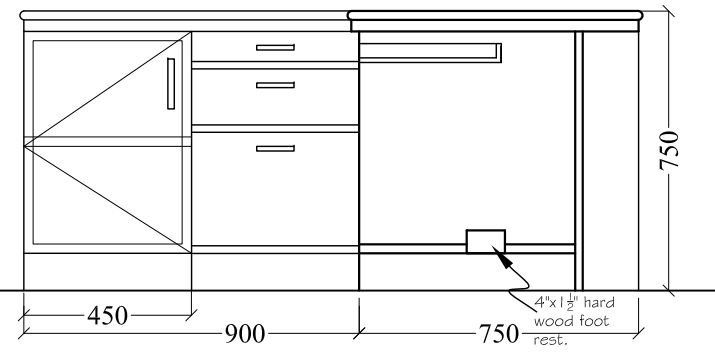
Architects, Engineers & Interior Designers

F - 3 2 8 Lado Sarai, Old M. B. Road N. D.-30

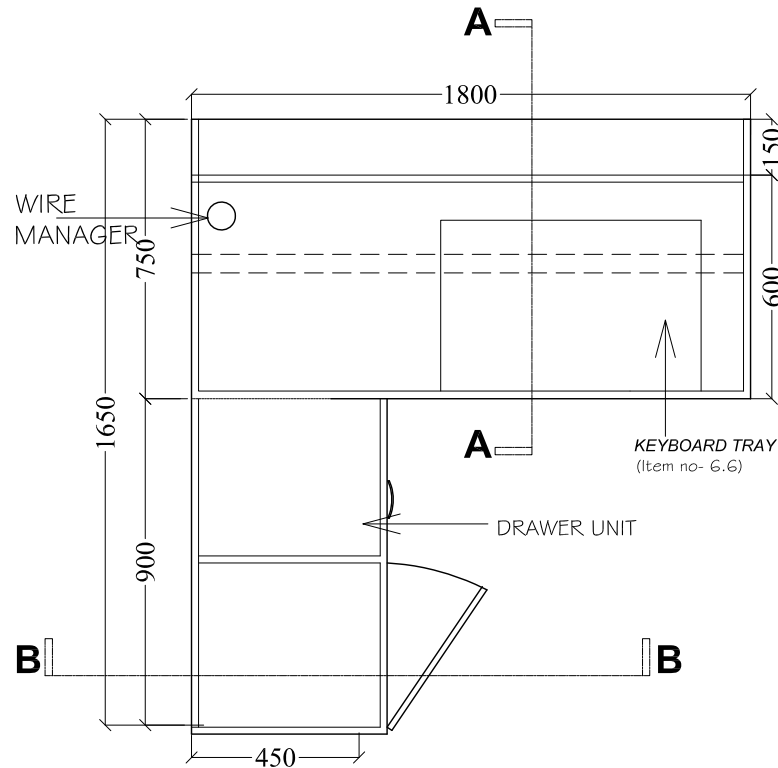
Ph. 41665455 , E-mail vastumandal@gmail.com



Section- 'B'B'



Section- 'A'A'



PLAN

PROJECT-
Proposed Interiors for Oriental
Insurance Company Ltd at '**NBCC**
Centre', Phase-1, Ohkla, New Delhi

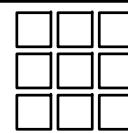
DRG. TITLE-
T4 (Principal/SDM)

DATE-
03.08.17

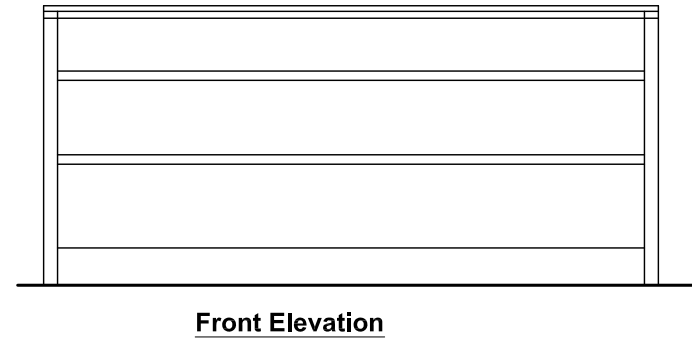
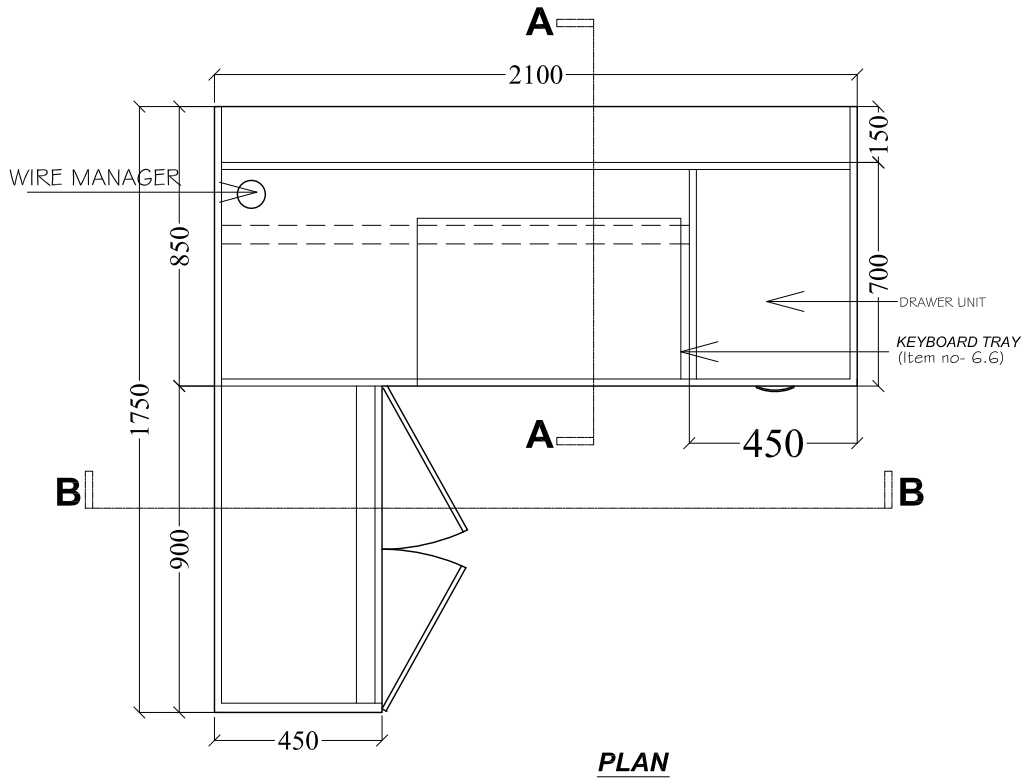
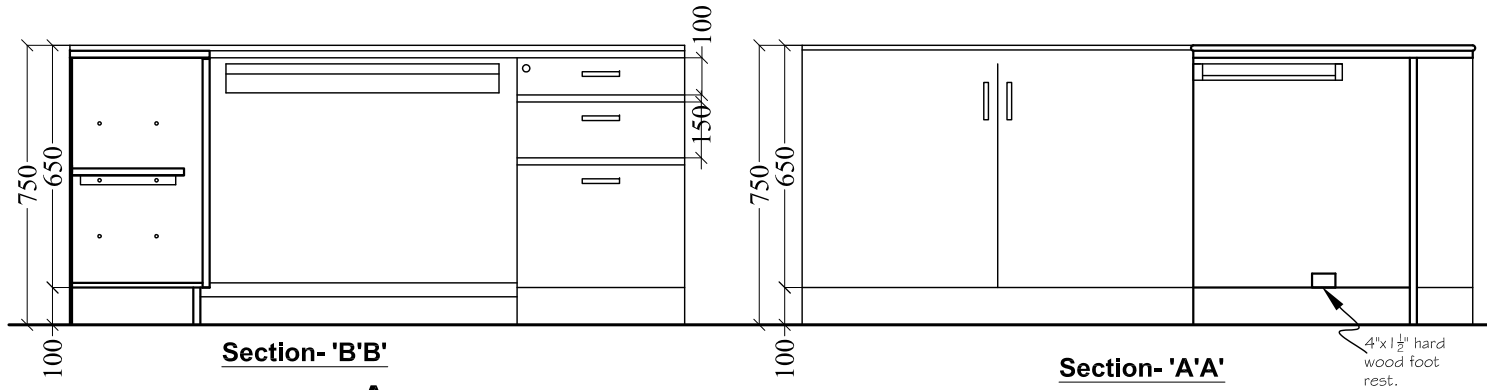
SCALE-

DWG NO-
Page 73 of 81

R-No.	Date	Revisions	Issued To



VASTU MANDAL
Architects, Engineers & Interior Designers
F - 3 2 8 Lado Sarai, Old M. B. Road N. D.-30
Ph. 41665455 , E-mail vastumandal@gmail.com



PROJECT-
Proposed Interiors for Oriental Insurance Company Ltd at '**NBCC Centre'**, Phase-1, Ohkla, New Delhi

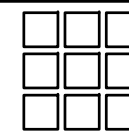
DRG. TITLE-
T₆ (CRM)

DATE-
03.08.17

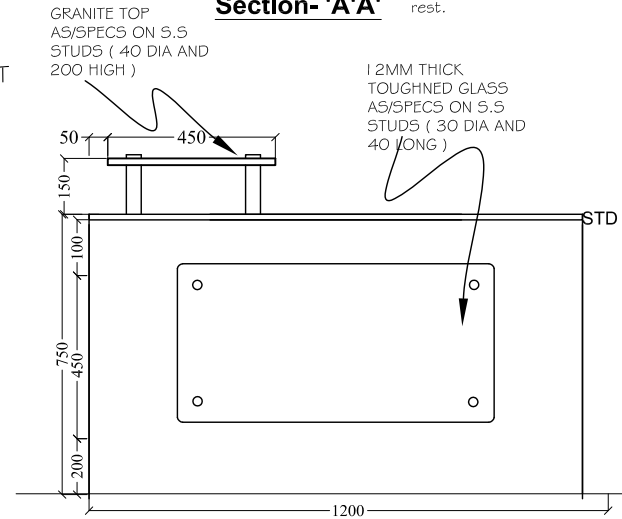
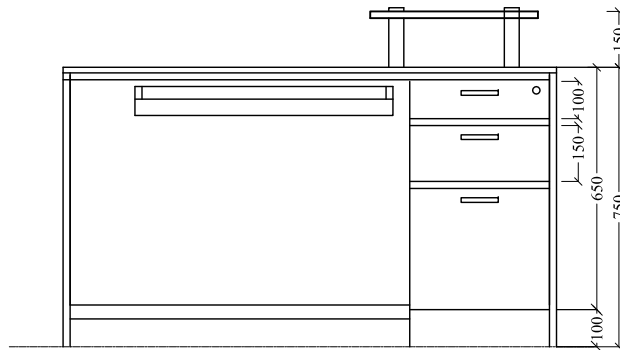
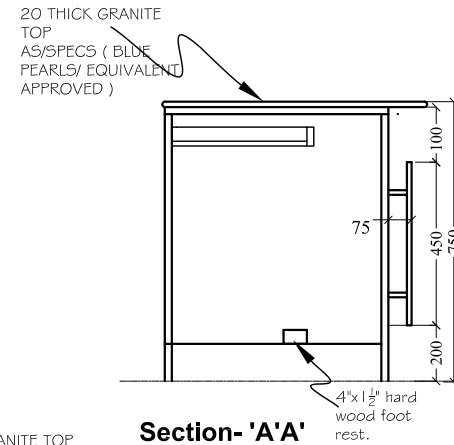
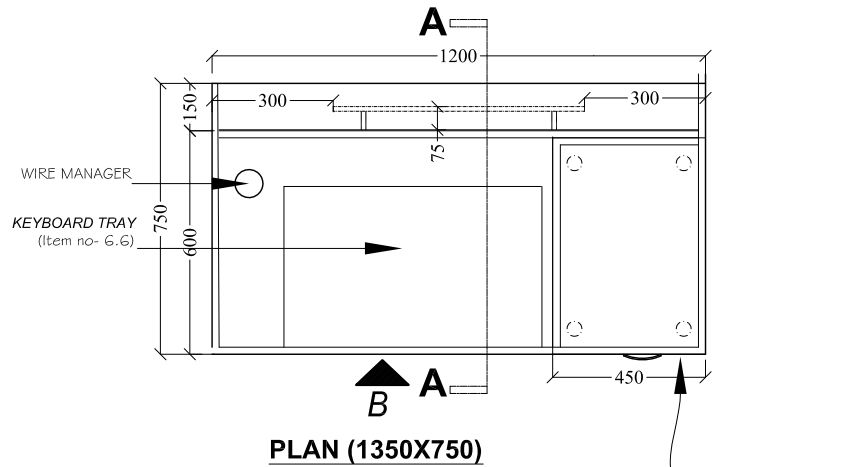
SCALE-

DWG NO-
B-71

R-No.	Date	Revisions	Issued To



VASTU MANDAL
Architects, Engineers & Interior Designers
F - 3 2 8 Lado Sarai, Old M. B. Road N. D.-30
Ph. 41665455 , E-mail vastumandal@gmail.com



PROJECT-
Proposed Interiors for Oriental
Insurance Company Ltd at '**NBCC
Centre'**, Phase-1, Ohkla, New Delhi

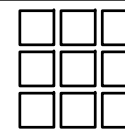
DRG. TITLE-
T9 (Reception)

DATE-
03.01.17

SCALE-

DWG NO-
Page 75 of 81

R-No.	Date	Revisions	Issued To



VASTU MANDAL
Architects, Engineers & Interior Designers
F - 3 2 8 Lado Sarai, Old M. B. Road N. D.-30
Ph. 41665455 , E-mail vastumandal@gmail.com



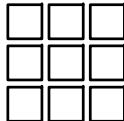
Computer Table (2 Seater)
Item no. 6.03(a)

PROJECT-
Proposed Interiors for Oriental
Insurance Company Ltd at '**NBCC**
Centre', Phase-1, Ohkla, New Delhi

DRG. TITLE-
Computer Table

DATE- **SCALE-** **DWG NO-**
D-13 **Page 76 of 81**

R-No.	Date	Revisions	Issued To

	<p>VASTU MANDAL Architects, Engineers & Interior Designers F - 3 2 8 Lado Sarai, Old M. B. Road N. D.-30 Ph. 41665455 , E-mail vastumandal@gmail.com</p>
---	---



Conference Table (2000x1800)

PROJECT-
 Proposed Interiors for Oriental
 Insurance Company Ltd at '**NBCC
 Centre'**,Phase-1,Ohkla,New Delhi

DRG.TITLE-
 Conference Table

DATE- 3.08.17 **SCALE-** **DWG NO-** B-14

R-No.	Date	Revisions	Issued To

VASTU MANDAL
 Architects, Engineers & Interior Designers
 F - 3 2 8 Lado Sarai, Old M. B. Road N. D.-30
 Ph. 41665455 , E-mail vastumandal@gmail.com



Dining Table

PROJECT-
Proposed Interiors for Oriental
Insurance Company Ltd at '**NBCC**
Centre', Phase-1, Ohkla, New Delhi

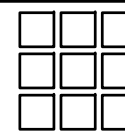
DRG. TITLE-
Dining Table

DATE-
03.08.17

SCALE-

DWG NO-
D-76
Page 78 of 81

R-No.	Date	Revisions	Issued To



VASTU MANDAL
Architects, Engineers & Interior Designers
F - 3 2 8 Lado Sarai, Old M. B. Road N. D.-30
Ph. 41665455 , E-mail vastumandal@gmail.com



Unwind Cafe Chair
Item no. 7.1



Premium Executive
very high back Chair
Item no. 7.2



Premium Executive
high back Chair
Item no. 7.3



Premium Executive
Mid back Chair
Item no. 7.4



Premium Executive Visitors
Chair with Armrest
Item no. 7.5



Premium Executive Visitors
Chair without Armrest
Item no. 7.6

PROJECT-
Proposed Interiors for Oriental
Insurance Company Ltd at '**NBCC
Centre'**, Phase-1, Okhla, New Delhi

DRG. TITLE-

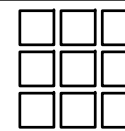
Chairs

DATE-
03.01.17

SCALE-

DWG NO-
B-47
Page 79 of 81

R-No.	Date	Revisions	Issued To



VASTU MANDAL
Architects, Engineers & Interior Designers
F - 3 2 8 Lado Sarai, Old M. B. Road N. D.-30
Ph. 41665455 , E-mail vastumandal@gmail.com



One seater sofa



Two seater sofa



Three seater sofa

PROJECT-
Proposed Interiors for Oriental
Insurance Company Ltd at '**NBCC
Centre**', Phase-1, Ohkla, New Delhi

DRG. TITLE-

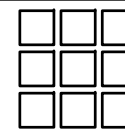
Sofas

DATE-
03.01.17

SCALE-

DWG NO-
B-18
Page 80 of 81

R-No.	Date	Revisions	Issued To



VASTU MANDAL

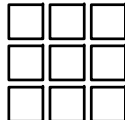
Architects, Engineers & Interior Designers

F - 3 2 8 Lado Sarai, Old M. B. Road N. D.-30

Ph. 41665455 , E-mail vastumandal@gmail.com



*Drona Training Chair
with Desklet*

PROJECT- Proposed Interiors for Oriental Insurance Company Ltd at ' NBCC Centre' , Phase-1, Okhla, New Delhi	DRG. TITLE- Training Chair		R-No.	Date	Revisions	Issued To	 VASTU MANDAL Architects, Engineers & Interior Designers F - 3 2 8 Lado Sarai, Old M. B. Road N. D.-30 Ph. 41665455 , E-mail vastumandal@gmail.com
	DATE- 03.01.17	SCALE-	DWG NO- Page 81 of 81 B.19				