

# **The Oriental Insurance Company Ltd.**

**Regional Office  
Hansalaya Building ,10<sup>th</sup> Floor ,  
Barakhamba Road,  
Connaught Place,  
New Delhi-110001**

## **Tender Documents**

**NAME OF WORK:** INTERIOR OF OFFICE  
For  
  
ORIENTAL INSURANCE CO. Ltd.  
Branch office  
  
At  
SCO-5 ,1<sup>st</sup> Floor, SECTOR-1, IMT,  
MANESAR, GURGAON

**Lead Consultants:** Vastu Mandal  
Architects & Interior Designers  
F-328, Lado Sarai,  
New Delhi-110030  
Ph 41665455 Fax 41665455  
E-Mail –vastumandal@gmail.com

## **PART –II**

## **FINANCIAL BID**

**Schedule of Quantities**

S.No.	Description of Item	Unit	Qty	Rate in figures (Rs)	Rate in words	Amount (Rs)
<p><b>Rates are for working at all heights including cost of centering shuttering and scaffolding Where ever basic prices are given they shall be inclusive of all taxes</b></p>						
<p><b>A CIVIL WORKS /SANITARY WORKS AND REPAIRS</b></p>						
	1 Providing and laying of Plain cement concrete 1:3:6 (1 cement : 3 coarse sand : 6 stone aggregate)	Cum	0.5			
2a	New R.C.C counter slab including cutting and chasing the walls providing new nominal steel as per directions, including welding to existing reinforcement wherever required ,c.c 1:1.5 :3 ( 1cement; 1.5 coarse sand :3 graded stone aggregate )including disposal of rubbish to all leads and lifts	Cum	0.5			
b	Stone on top of RCC counter with base rate upto Rs 750 Sqm including polishing	Sq m	2.5			
	3 Half brick masonry with FPS bricks of class designation 75 at all levels and height in cement mortar 1:4 ( 1cement :4 Coarse sand)	Sq m	10			
	4 Extra for providing and placing in position 2 Nos. 6 mm dia M. S. bars at every third course of half brick masonry ( with F. P. S. bricks )	Sq m	10			
	6 Plaster on walls of all thicknesses in patches of all sizes including cutting the patch in proper shape and preparing and plastering the surface of the walls complete including disposal of rubbish to all leads and lifts					
a	With cement mortar 1:4 (1cement :4 sand 50% fine sand 50% coarse sand)(internal)	Sqm	20			
	9 Providing and laying white/coloured plane glazed tiles of approved make Kajaria /johnson 200 X200 in skirting, risers of steps and dado on 12mm thick cement plaster 1:3(1 cement: 3 course sand) and jointed with white cement slurry and matching pigment etc	sqm	10			

S.No.	Description of Item	Unit	Qty	Rate in figures (Rs)	Rate in words	Amount (Rs)
10	Providing and laying 600x 600 vitrified tiles matching the existing tiles in skirting, risers of steps and dado on 12mm thick cement plaster 1:3(1 cement: 3 course sand) and jointed with white cement slurry and matching pigment etc	sqm	20			
11	Dismanting old C.I. Pipes wherever required breaking lead caulked joints, including disposing to all leads and lifts					
a	75 mm diameter C.I. Pipe	metre	2			
12	Dismanting old G.I. Pipes ( internal works) wherever required including cutting the walls 15 mm to 40mm diameter G.I. Pipe	metre	5			
13	Providing and fixing Salem Stainless Steel AISI304(18/8)sink without drainboard as per I.S.13983 with C.I. Brackets ,and stainless steel plug 40mm including painting of fittings and brackets, cutting and making good the existing RCC counter and walls wherever required					
	610 X 510 bowl depth 200	each	1			
14	Providing and fixing P.V.C. waste pipe for sink or wash basin including P.V.C.fittings complete 40 mm dia	each	4			
15	Providing and fixing following C.P.Brass fittings including all nuts and washers ,CP flanges etc including cutting and making good the walls wherever required					
a	Providing & fixing sink cock with swivel cock of required size with 375mm long copper connection and brass bush including cutting and making good the walls wherever required. <b>(Parko Classic 1520 or approved equivalent)</b>	each	1			
b	Providing and fixing white C.P cast brass soap dish of size 15cmx15cm, complete including cutting and making good the walls, wherever required. <b>(MODEL NO - OL-SD-4, CAMRY MAKE or approved equivalent)</b>	each	2			

S.No.	Description of Item	Unit	Qty	Rate in figures (Rs)	Rate in words	Amount (Rs)
-------	---------------------	------	-----	----------------------	---------------	-------------

c Providing and fixing C.P. brass towel ring fixed to wooden cleats with C.P. brass screws including cutting and making good the walls wherever required. (*MODEL NO - OL-RG-2, CAMRY MAKE or approved equivalent*)

Each 2

**16 Soil,Waste and Vent Pipes**

a Providing, fixing & testing uPVC SWR pipes conforming to IS 13592 (Type B) alongwith all required fittings like tees, bends, crosses with or without access doors jointed with approved solvent cement as per manufacturer's recommendations, fixed to walls and ceilings with clamps complete including cutting and making good the floors and walls where required complete of outer diameter.

110 mm OD Metre 5

b Providing, fixing & testing uPVC pipes, conforming to IS 4985 class 3 (6 kg/cm<sup>2</sup>) including injection moulded fittings, jointing with solvent cement, cutting and making good the floors and walls and jointing to trap/waste pipe, complete of outer dia.

iii 40 mm OD Metre 5

c Providing and fixing chlorinated polyvinly chloride (CPVC) CTS SDR 11 hot & cold water pipes conforming to IS capable to withstand 27.6 kg/cm<sup>2</sup> at room tempreature water and 7.03 kg/cm<sup>2</sup> at 82°C and all fittings of CPVC SDR 11 like elbow, tee, reducers, couplers, brass threated male & female (adapoters, elbow, tees). The pipe fitting joining to be done with solvent cement as per manufacturers specifications & recommendations. The above includes chaise cutting fixing of pipes fittings testing of assembly and finally making good the wall to the satisfaction of Architect

CONCEALED PIPING

i 15mm nominal outer dia, CTS pipe (15.90mm OD) Metre 5

ii 20mm nominal outer dia, CTS pipe (22.20mm OD) Metre 5

S.No.	Description of Item	Unit	Qty	Rate in figures (Rs)	Rate in words	Amount (Rs)
-------	---------------------	------	-----	-------------------------	---------------	-------------

**B FURNITURE /STORAGES**

**1 Storages**

Providing & fixing storage (1'-3" deep) as per site requirements made of 3/4" board and with shelves in between at spacing of 1'4" & front side to be laminated with 1.00 approved shade of laminate. All the exposed surfaces shall be covered with 1mm laminate and edges with Steam Beach moulding lipping including hinges (EBCO) Godrej locks, handles catchers etc. as per Architect instructions. The inner portion shall be enamel painted with Berger/Asian paint as approved. Back portion shall be provided with 6 mm thick water proof ply. SS Handles 150 long as approved.

Sqm 45

**C PANELLINGS/PARTITIONS**

**1 P/F Pin Board** made with 10mm thick sitatex board covered with Fabric. This skin will be attached to the partition .The Fabric range will be as per app. with basic rate of being Rs150/- per mtr.

Sqm 10

**2 P/F 3M sparkle** film in natural colour on glass panels as per pattern / design

Sqm 10

**3 P/F printed perforated** film on glass panels as per pattern / design

Sqm 12

S.No.	Description of Item	Unit	Qty	Rate in figures (Rs)	Rate in words	Amount (Rs)
-------	---------------------	------	-----	----------------------	---------------	-------------

4 Providing and fixing 83 mm thick low height double skin plain partitions using 50x 25 mm, 18 gauge MS tubular sections welded together @ 600 mm c/c in both directions or part thereof in frame work and fixed with floor/ walls with screws and anchor bolts etc. The frame work shall be provided with 12 mm thick BWR plywood on both side. The base of ply upto 200 mm ht. shall be painted with antitermite chemical emulsion as manufactured mby fevicl industries i.e terminator brand or equivalent. Rate shall be inclusive of making cutting in frame work & ply etc. for receiving electrical conduits & installations etc. Finally the partition shall be finished with laminate/ veneer of approved make & shade which shall be paid extra under seperate item. The partition shall be provided on top/sides with steam beech wood/Teak rail of size approx. 90 x 32 mm including melamine polishing / DUCO paint etc. complete as per design/ directions.

sqm 12

5 Providing and fixing 1.0 mm thick laminate of approved make & shade on partitions or wherever required including making grooves/ patterns all complete as directed ( base price around 25-30/- sft). Deduction for not fixing the laminate shall also be made on this rate.

sqm 25

**D DOOR /WINDOWS**

1 P/F Flush door with hard wood frame 100x50 all around 40 mm thick solid case shutter with 1mm thick Laminate on both sides , as per drawing and 1/4" thk. painted hard wood lipping all around the shutter. The doors will have best quality 4 Nos 4" long SS hinges, SS finished double legged foot operated door stays, Polyvinyl door stopper fixed to skirting, SS finish tubular handle & mortice lock of Dorset make- model SDORSS( SS finish) . This will have provsion for Al.air transfer Grill as per dwg.Size : 850 x 2100.

Nos. 1

2 Providing Exposed Door closer fixed on the wooden section with SS plate finish.Doorking or equivalent approved make

Nos. 1

S.No.	Description of Item	Unit	Qty	Rate in figures (Rs)	Rate in words	Amount (Rs)
-------	---------------------	------	-----	----------------------	---------------	-------------

3 P/f Ghana Teak wood in threshold , frames ,jambs etc.( without any finish- unexposed raw sections) of specified sections glazings and other areas as per the profile given in the drawings including beadings.

Cft 3

**4 VENETIAN BLINDS**

a Providing & fixing 100mm wide vertical blinds with extruded power coted head rails, having control units,spaces, runners with reduction gear mechanism tilt control for rotation of 180 degree louvers made of fabric and coloured approved by the bank and with scotch guard coating and bottom mechanism of power coated galvanised steel with required component all complete as per manufacturers specifications.

TRAC/ Vista /Mac or equiv. approved

Sqm 12

**5 STORAGES**

**All internal wood work shall be treated with anti termite preservative against borer pests and white ants. All internal frame work shall be salwood unless.**

**All the internal surfaces of the storage units (top, bottom of shelves, back of storage, inner face of the shutters shall be fixed with 0.8 mm laminate of.**

**The mode of measurement for all types of storages shall be front elevation area.**

5.1 Full height storage unit : Providing and fixing 2100 mm high storage unit made out of 19 mm BWR ply for verticals, top, bottom, and intermediate vertical partitions @ 900 c/c or part thereof and backing of 6 mm th. BWR ply. The top & exposed sides of storage to be finished with laminate and complete in all respects as per design.

Shutters shall be in 19 mm BWP grade block board with teak wood lipping all -around. The front & back to be finished with 1 mm thick laminate.

Shelves : Shelves are made of 19 mm BWR grade block board with teak wood lipping and fixed @ 375 mm c/c supported on heavy duty S.S pins. The teak wood lipping shall be polished.

S.No.	Description of Item	Unit	Qty	Rate in figures (Rs)	Rate in words	Amount (Rs)
-------	---------------------	------	-----	-------------------------	---------------	-------------

Locks shall be Godrej make universal drawer/ cupboard lock ( model no 5041) dead lock with S.S key- master key for groups as required.

Handles shall be Kich make AIAI 316 grade 96 mm long 12 mm dia for each shutter.

Skirting : 100 x 19 mm ply for skirting. All external / visible surfaces including top/ back if exposed , shall be finished with 1.0 mm laminate of approved make& shade.

The depth of storage to be as under:

(a) Upto 450 mm deep sqm 15

**5.2** Low height / Wall Mounted storage unit : Providing and fixing approx. upto 1200 mm high storage unit made out of 19 mm BWR ply for verticals, top, bottom and intermediate vertical partitions @ 900 c/c or part thereof and backing of 6mm th. BWR ply. The top & exposed sides of storage to be finished with laminate and complete in all respects as per design.If provided on wall anchorage supports with fastners will be given as per directions.If provided on floor one drawer upto 4" ht on telescopic channels to be provided

Shutters shall be in 19 mm BWP grade block board with teak wood lipping all -around. The front & back to be finished with 1 mm thk laminate.

Shelves : Shelves are made of 19 mm BWP grade plywood with teak wood lipping and fixed @ 375 mm c/c supported on heavy duty S.S pins. The teak wood lipping shall be polished.

Locks shall be Godrej make univesal drawer/ cupboard lock( model no 5041) dead lock with S.S key - master key for groups as required.

Handles shall be Kich make AISI 316 grade 96 mm long 12 mm dia for each shutter.

Skirting : 100 x 9 mm ply for skirting. All external / visible surfaces including top/ back if exposed, shall be finished with 1.0 mm laminate of approved make & shade.

The depth of storage to be as under :

(a) Upto 450 mm deep sqm 15



S.No.	Description of Item	Unit	Qty	Rate in figures (Rs)	Rate in words	Amount (Rs)
-------	---------------------	------	-----	----------------------	---------------	-------------

**E PAINTING /POLISHING**

	<b>1</b> Removing white /colour wash/distempers by scrapping and sand papering and preparing the surface smothh including necessary repairs to scratches etc. complete	Sqm	350			
	<b>2</b> Distemping with dry distemper (ready made) of approved brand and manufacturer and of required shade and colour complete. As per manufacture's specification.Berger/Asian/shalimar					
<b>a</b>	One or more coats on old work.	Sqm	35			
	<b>3</b> Plastic Emulsion Paint (ready made) of approved brand and manufacturer and of required shade and colour complete. As per manufacture's specification.Berger/Asian/shalimar					
<b>a</b>	One or more coats on old work.	Sqm	300			
<b>b</b>	On new works as / directions	Sqm	25			
	<b>4</b> Enamel paint on old work					
<b>a</b>	One or more coats on old work. Shalimar/Asian	Sqm	25			
<b>b</b>	One or more coats on new work.	Sqm	10			

**F ELECTRICALS**

	<b>1</b> Providing, fixing and testing of telephone point wiring with single twisted pair of 0.61 mm dia. tinned copper conductor PVC insulated and sheathed wire in 2 mm thick 25/20 mm dia. PVC conduit ISI marked including all necessary conduit accessories and end termination at tag blocks/telephone outlets, fixing of concealed GI boxes and telephone outlets but excluding the cost of box/telephone socket outlet and complete in all respect.	Nos.	20			
	<b>2</b> Providing, fixing and termination of moulded type RJ-11 telephone outlet complete with,fixing plate & recessed GI box etc.	Nos.	14			

S.No.	Description of Item	Unit	Qty	Rate in figures (Rs)	Rate in words	Amount (Rs)
3a	Networking with Cat-5E including Crimping ( D-link /equivalent approved)	Mtr	600			
b	Providing & Fixing IOs as /Approval	Nos	14			
4	<p>POINT WIRING of the following light/ power outlets, with heavy duty PVC or MS (as specified) conduit pipes either on surface or concealed, complete with all accessories like brackets, clamps saddles, pull through/junction boxes. PVC insulated single core copper wire of specified size, insulated/bare copper earth wires of specified size including earthing of switch boxes, providing all accessories and interconnections as required to complete the installation as per technical specifications. All cables shall be as per IS:694 solid core upto 6sq.mmm and stranded for higher sizes.</p> <p>Cost of switches and switch boxes is included in the quoted rates</p>					
4a	Wiring of 16 amps power sockets with 2x4 sq mm+1x2.5sq mm PVC insulated stranded copper conductor wires in ISI marked to , 16 SWG , ERW MS conduits above ceiling including cost of conduits , wall /Floor chases complete as required including providing modular type 16 amps socket and swith wth switch box complete as required( two point in one circuit for connection point of view)	Nos.	5			
4b	Wiring for 5 amps raw power sockets with 3x2.5 sq mm PVC insulated copper conductor wires in ISI Marked , 16 SWG , ERW MS conduits including providing and fixing switch box, 6amps socket, 6 amp switch complete of modular type at levels shown in drawing with screwless plate complete as required (Max 4 socket in one circuit/table.)	Nos.	15			
4c	Wiring for UPS power sockets with 3x2.5 sq mm PVC insulated copper conductor wires in ISI Marked, 16 SWG , ERW MS conduits including supply and fixing switch box,3nos 6 amps sockets,1nos 16amp switch,modular type with grid and face plates screwless modular type at levels showns in drawing complete as required (max 3 points /table on one circuit)	Nos.	15			

S.No.	Description of Item	Unit	Qty	Rate in figures (Rs)	Rate in words	Amount (Rs)
4d	Wiring for the following light points with 1.5 Sq. mm ( stranded conductor ) PVC insulated copper conductor wires in concealed / exposed 2 mm wall thickness PVC conduits as called for in specification including providing and fixing 5 amps CPL type grid switches 1.2 mm thick sheet steel fabricated and galvanised switch box with earth stud complete with brass nickel plated screws and earthing with 18 swg ( 1.2 mm dia ) bare copper earth wire.					
i	One point controlled by one 5 amp switch	Nos.	15			
ii	Extra on above for providing additional light in the above set	Nos.	15			
5	Supply and fixing of heavy duty PVC ISI mark conduit with all required accessories of following sizes as required.including providing G.I box in floor with 2.0mm thick stainless steel covers.					
a	25mm dia	Mtr	100			
b	32mm dia.	Mtr	50			
6	Supplying ,Installation , Testing & Commissioning of pre-wired ,fittings of following type complete with all accessories and tubes etc including connections with 1.5 sq.mm PVC insulated ,copper conductor, single core wire as required					
a	Wipro WCF 82236 SGW or equivaent approved	Nos.	12			
b	Wipro WRF 20120 or equivaent approved	Nos.	3			
7	Shifting / extending existing light points, including providing additional 1.5 Sq.MM. ( stranded conductor) wiring,FRLS, 18 SWG copper earth, M.S. conduit/ flexible pipe and all related civil work. Complete as per directions of architect.	Nos.	2			
8	<b>Distribution Board</b>					
a	Design, manufacture, supply, installation, testing and commissioning of wall mounted main distribution board made out from 1.6 mm thick sheet steel enclosure, compartmentalized and epoxy painted complete in all respects as per design					
	Bus bar					

S.No.	Description of Item	Unit	Qty	Rate in figures (Rs)	Rate in words	Amount (Rs)
-------	---------------------	------	-----	-------------------------	---------------	-------------

250 Amp TPN 415 V 50 Hz Electrolytic Al conductor Bus Bar

Incomer

1 No. - 200 Amp - MCCB, TPN

Out goings

18 Nos. -6A to 32 A SPMCB

Set

1

**b** Design, manufacture, supply, installation, testing and commissioning of wall mounted / recessed type distribution board

UPS DB8 way SPN DB with 8 nos. 10A SP MCB as outgoing and one set 40A DP MCB

Set

1

---

**Total**

---

**Total amount in Words**

Contractors Signature

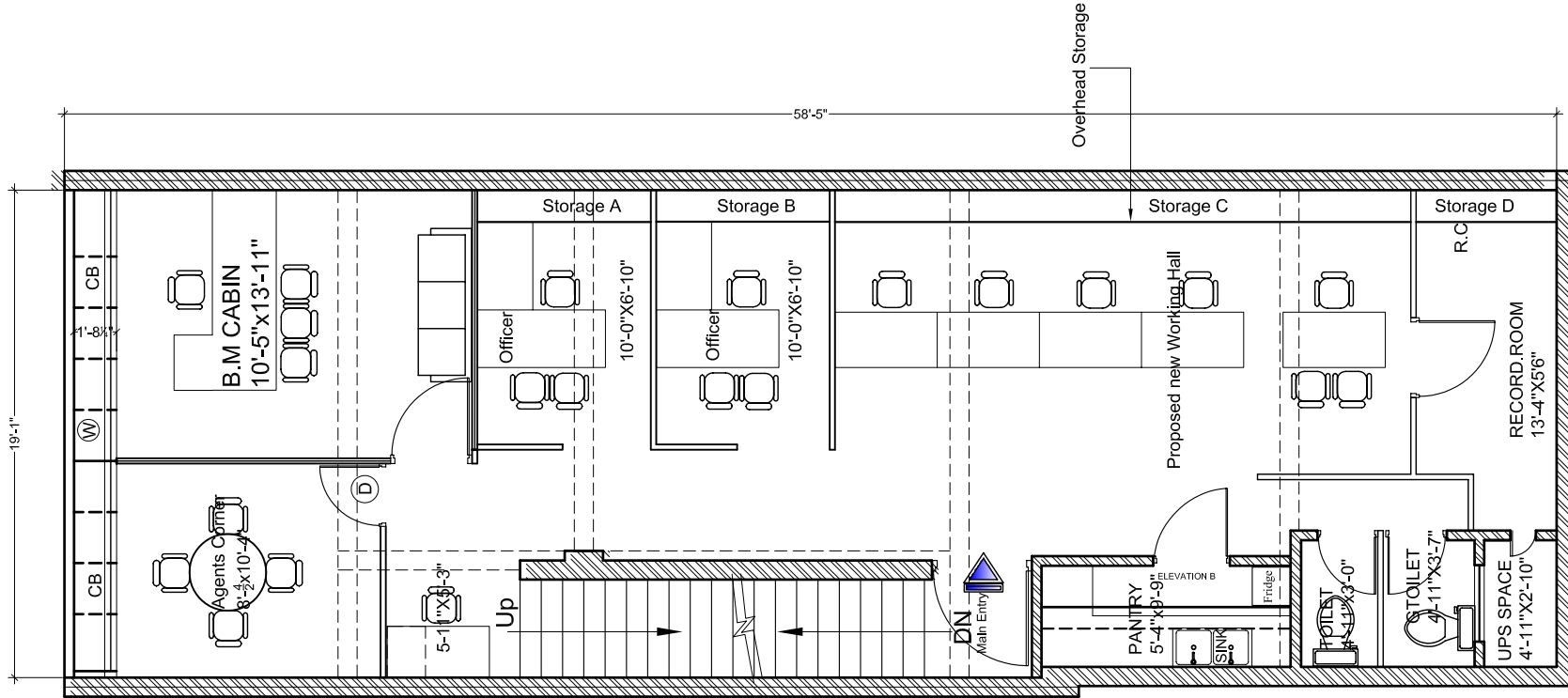
Contractors Name

**List of Approved makes - As given below or as per  
architects approval**

<b>MATERIAL</b>	<b>MANUFACTURER/BRAND NAME</b>
<b>1</b> Anti termite chemical ( Chlorpyriphos emulsifiable concentrate )	NOCIL
<b>2</b> Adhesive	For wood-Fevicole-SH/Movicole HV
<b>3</b> Fitting Hardware	EBCO( Earl Bihari ), Hetich
<b>4</b> Locks	Godrej, Golden
<b>5</b> Laminate	1.5 mm thk. Greenlam, Century 1.0mm thk. ,Greenlam,Sunmica,Century
<b>6</b> Paints	Asian, Berger, Dulux , Shalimar (Bison) British Paints, Asian Paints or equivalent.
<b>7</b> Wood preservations	Confirming to IS 1659
<b>8</b> Plywood	Confirming to IS 303
<b>9</b> Glass	Modi float glass
<b>10</b> Prelaminated Particle Board	Archid, Nova pan, Greenlam,
<b>11</b> Softboard	Sitatex
<b>12</b> Cement	L&T, Ambuja,Bangur, Birla,JK
<b>13</b> Vitrified Tiles	Kajaria, Nitco, Marbonite
<b>14</b> Paint ( Distemper / Plastic Emulsion	Berger,Asian , Shalimar
<b>15</b> Vertical Blinds	Mac/Vista levelor/ as approved
<b>16</b> MCCB	L&T,SEIMENS,MERLIN GERIN(FRANCE)
<b>17</b> MCB,RCCB &DISTRIBUTION BOARDS	LEGRAND,L&T,MERLIN GERIN.
<b>18</b> CONDUIT	BEC ,AKG
<b>19</b> COPPER WIRE	SKYTONE,RALLISION,PHINOLEX,RAJNIGANDHA.
<b>20</b> POWER CABLES	CCI ,HAVELLS,RALLISION,GEMS CAB.
<b>21</b> FITTING	PHILIPS ,CROMPTION
<b>22</b> SWITCH & SOCKETS	MK ,ANCHOR ROMA.
<b>23</b> CABLE END TERMINATION	COMMETT
<b>24</b> THIMBLES	DOWELLS
<b>25</b> TELEPHONE TAG BLOCK	KRONE/AMP/AVAYA

Contractors Signature

Contractors Name



Project- Proposed Interior of office for Oriental Insurance Co.Ltd . Exte Counter,SCO-5 1st.F, Sector-1 IMT Manesar, Gurgaon ( Hr.)	Drg. Title Proposed Layout Plan	Revision <table border="1"> <tr><td> </td><td> </td><td> </td><td> </td></tr> <tr><td> </td><td> </td><td> </td><td> </td></tr> <tr><td> </td><td> </td><td> </td><td> </td></tr> <tr><td> </td><td> </td><td> </td><td> </td></tr> </table>																
Date. 22/05/ 2013	Drg. No. D-01	Scale																

**VASTU MANDAL**  
 Architects, Engineers & Interior Designers  
 F - 3 2 8 Lado Saral, Mehrauli, N Delhi-30,  
 Ph-41665455., E-mail vastumandal@gmail.Com